



# UNIDAD EDUCATIVA "COTOGCHOA"

## SUBMARINE

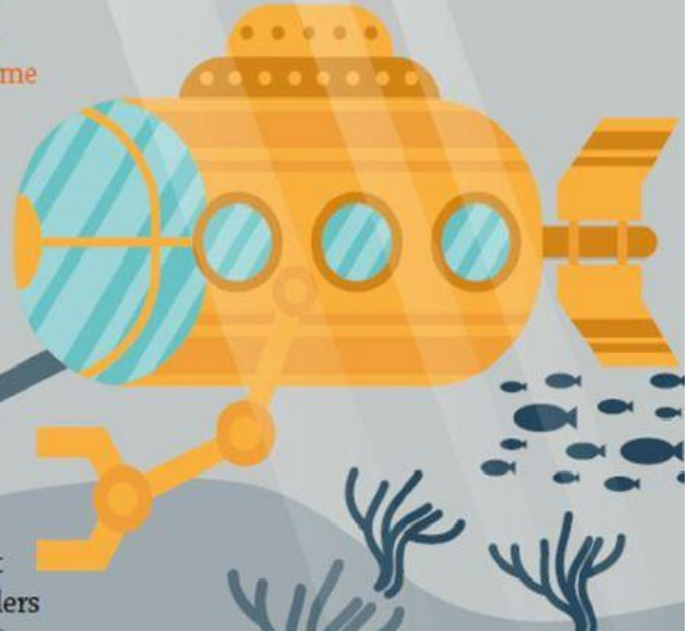


CHOOSE THE CORRECT ANSWER ACCORDING WITH THE READING  
(ESCOGE LA RESPUESTA CORRECTA DE ACUERDO A LA LECTURA).

In this lesson, we will discover how submarines work and how they **submerge** in water. The first submarines were created during the First World War. Today, submarines have different uses. For example, people use submarines to study **maritime** life, for wars, and even for tourism.

In general, submarines have three sections. The first is a section for the **commandant**. In this section the commandant controls the submarine and remains in contact with the supervisors on the ground. In the second part, is a kind of dining room for the members of the **crew** and in the third section the crew members can sleep and relax.

To submerge, submarines have a large container of water. When the container is full, it is heavy and the Remo: the officer who gives orders



### 1. THE FIRST SUBMARINE WERE CREATED DURING....

FIRST WORLD WAR

SECOND WORLD WAR

THIRD WORLD WAR

### 2. PEOPLE USE SUBMARINES FOR.....

HOLIDAYS

TOURISM

GAMES

### 3. HOW MANY SECTIONS DOES SUBMARINE HAVE?

2

5

3