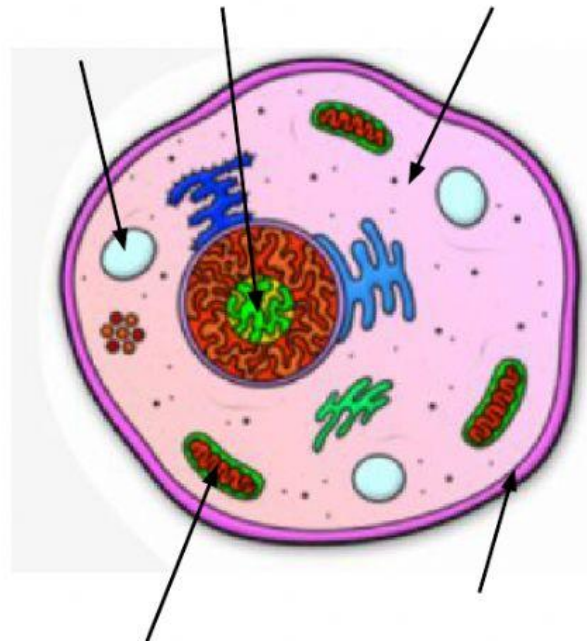
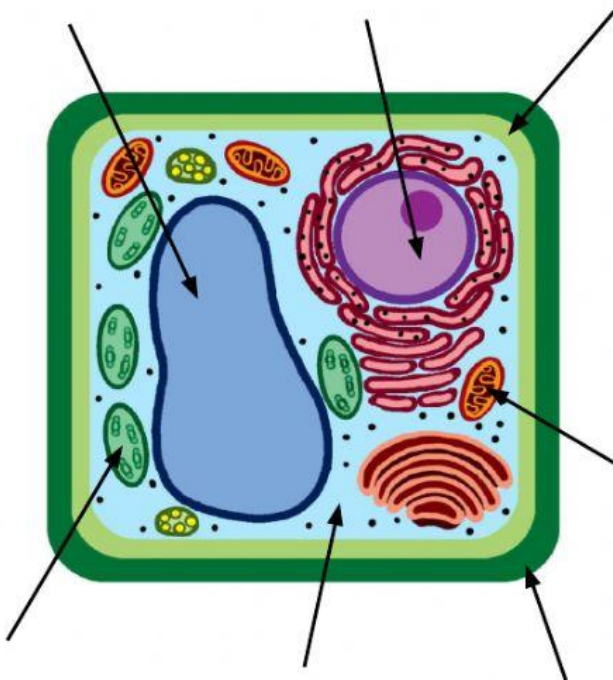


Plant and Animal Cells

1. Use the box below to label the organelles of the plant and animal cells. Make sure to copy the name of the organelle correctly. Some of the organelles can be used more than one time.

Mitochondria	Large Vacuole	Small Vacuole	Cytoplasm
Cell Membrane	Nucleus	Chloroplasts	Cell Wall



2. The type of cell in picture 1 is:
3. The type of cell in picture 2 is:
4. List the organelles that are only found in PLANT cells.