

The Virtual School, Bahamas

Health science

Name:

Grade: 9S or 9v

School:

Date:

Place on every
page!

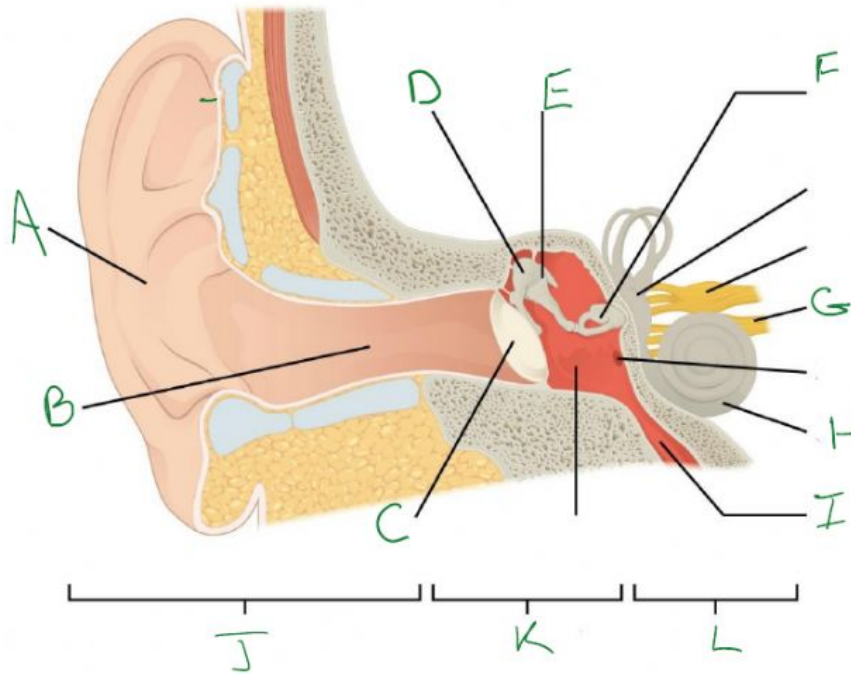
The Human Ear

Section A: Choose the correct letter (Only write the number and the corresponding letter) 10pts (5 minutes)

<p>1. The cochlea contains the sensor organ or hearing</p> <ul style="list-style-type: none">a. Trueb. False <p>2. The ossicles are the ___ tiny ear bones</p> <ul style="list-style-type: none">a. 4b. 3c. 2 <p>3. Hearing involves the Organ of corti converting liquid vibrations to _____?</p> <ul style="list-style-type: none">a. Hormonal signalb. Ions / Chemical Messagesc. Sound Vibrationsd. Sound interpretation	<p>4. Which area of the ear is connected to the Auditory Nerve?</p> <ul style="list-style-type: none">a. Eustachian Tubeb. Cochleac. Vestibular Canals <p>5. Which area of the middle ear connects to the throat?</p> <ul style="list-style-type: none">a. Eustachian Tubeb. Cochleac. Vestibular Canals
--	--

Section B: I) Label the letters only. (12pts) (10 minutes)

Options: Cochlea, Pinna, External Auditory canal, Malleus, Incus, Stapes, Tympanic Membrane, Eustachian Tube, Auditory Nerve



- II) a) Place an X on the area that controls balance**
b) Place a Z on the area where the Organ of Corti is located.

Section C: Answer in complete sentences. (NO NEED TO REWRITE THE QUESTION)
[8pts] (20 minutes)

1. What type of hearing loss would be due to stiffening of the hair cells in the inner ear system? (1pts)
2. What are two methods to maintain health hearing? (2pts)
3. Describe how we hear? (5pts)

TOTAL PTS: 25