

2 Match the sentences (1-6) to the problems (A-F) in the pictures. ...

- ... 1 We should recycle things we don't need.
- ... 2 Factory waste poisons lakes and rivers.
- ... 3 Car exhaust fumes and factory smog poison the air.
- ... 4 We should turn off the lights when we leave a room.
- ... 5 Many animals are disappearing because they are losing their natural habitats.
- ... 6 Companies cut down trees to make roads.



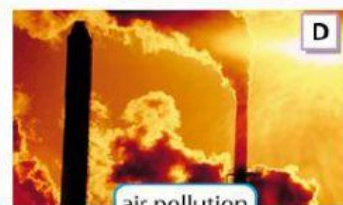
rubbish



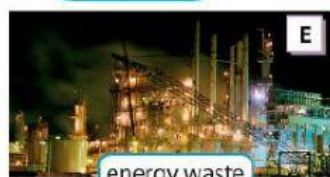
water pollution



deforestation



air pollution



energy waste



endangered species

Space & Earth

Match the environmental problems to the solutions. ...

deforestation

air pollution

too much energy consumed

water pollution

too much rubbish

PROBLEMS	SOLUTIONS
... 1) <input type="text"/>	recycle
... 2) <input type="text"/>	stop burning fossil fuels
... 3) <input type="text"/>	use renewable resources
... 4) <input type="text"/>	stop leaving waste in lakes, rivers and seas
... 5) <input type="text"/>	replant trees