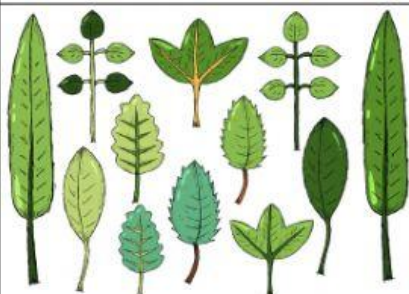
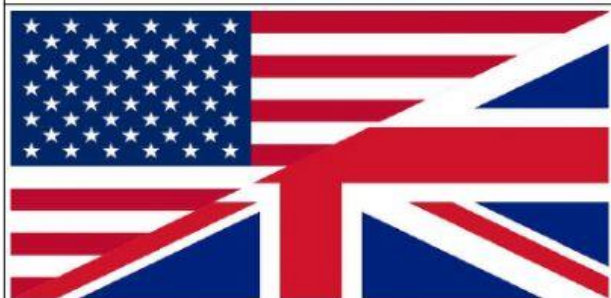
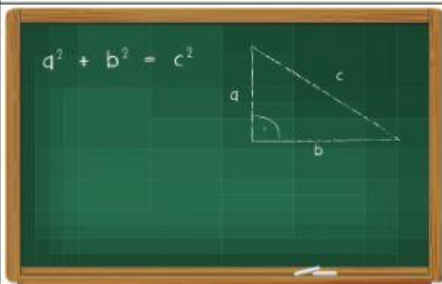


1. Complete the names of subjects. Uzupełnij nazwy przedmiotów:

LE

2. **Decide if the sentences are true (T) or false (F).** Zdecyduj czy zdania są prawdziwe (T) czy fałszywe (F).

- 6.15 – It's quarter to seven
- 10.00 – It's eleven o'clock
- 8.30 – It's half past eight
- 12.45 – It's quarter to one
- 9.15 – It's half past nine
- 18.00 – It's six o'clock

3. **Drag the words to make a sentence.** Przeciągnij słowa żeby ułożyć zdanie.

a)

David

geography

on Monday.

has

got

--

--

--

--

--

b)

time

What

it?

is

--

--

--

--