

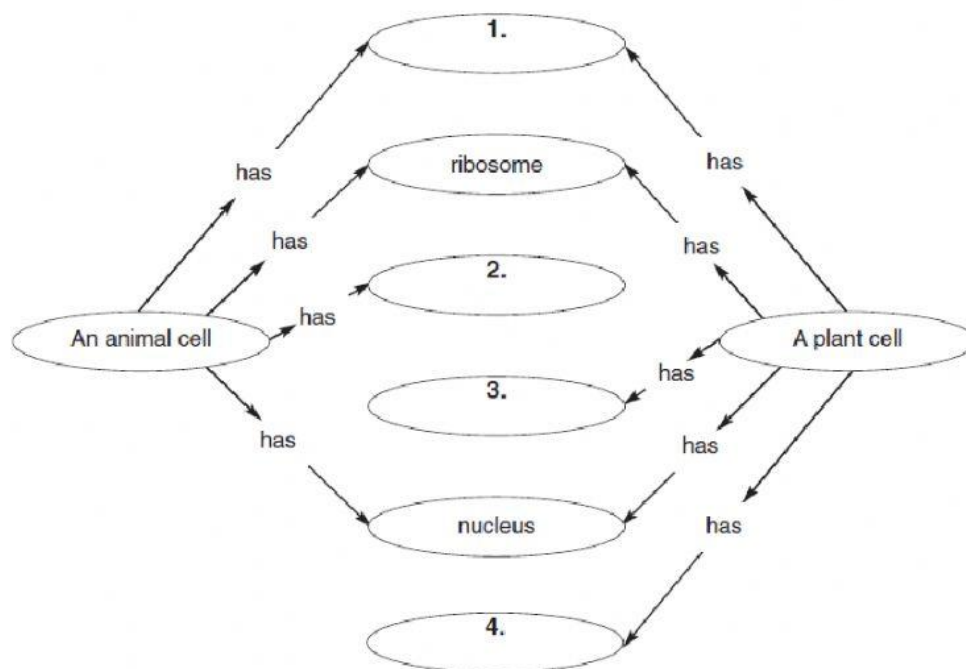
Directions: Complete the concept map using the terms listed below.

lysosome

chloroplast

mitochondria

cell wall



Directions: Complete the following sentences using the terms listed below.

virus

cytoplasm

microscope

vaccine

cell theory

5. A _____ is often used to prevent viral diseases.
6. We need to use a _____ to see most cells.
7. Cells are filled with a gelatinlike mixture called _____.
8. A _____ is a disease-causing strand of hereditary material surrounded by a protein coating.
9. The _____ was developed from the observations and conclusions of several scientists.