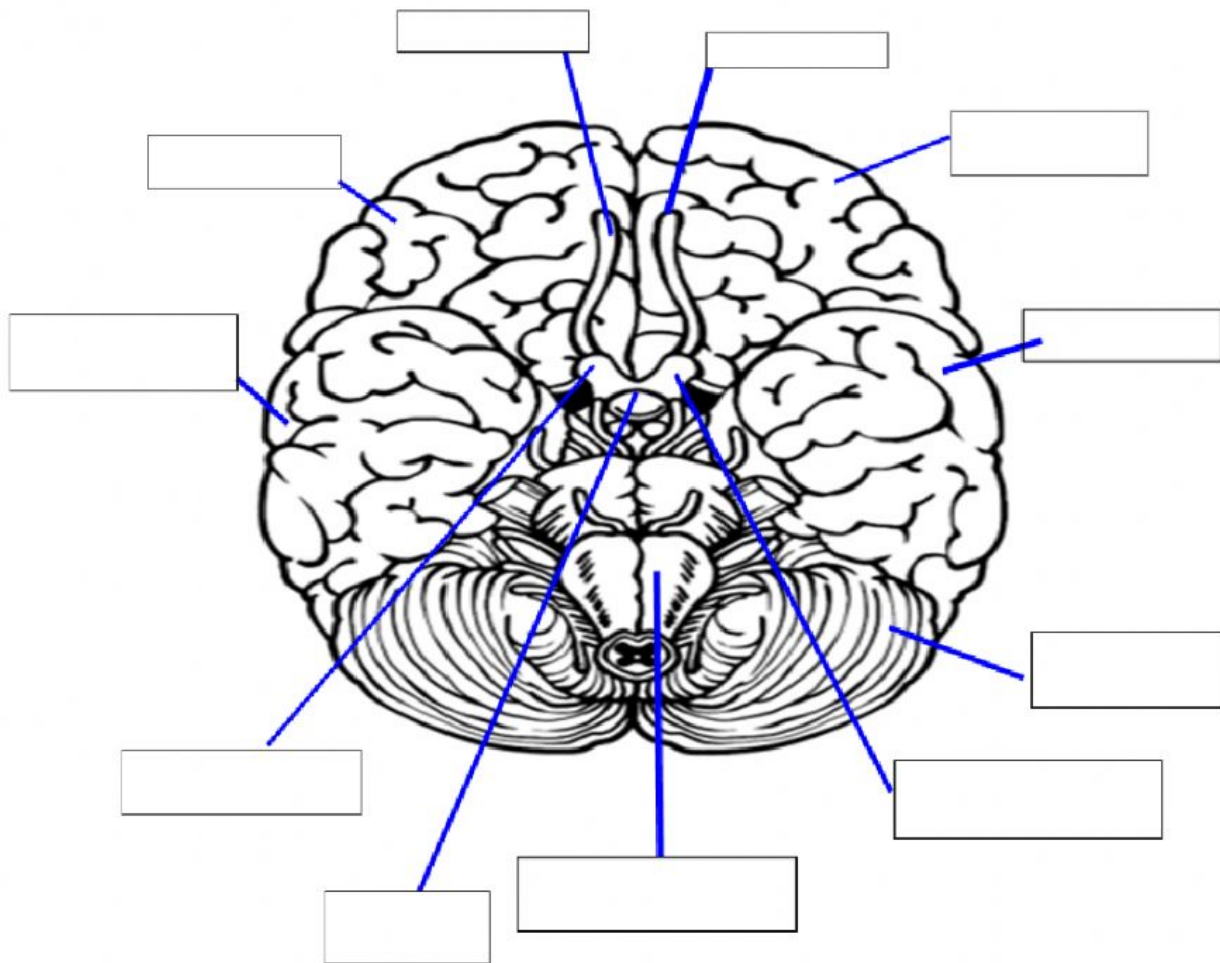


Bottom View of Brain Worksheet

This worksheet is worth 18 points

Part I: Label

Brain Stem	Right Optic Nerve	Left Optic Nerve	Optic chiasm	Right Olfactory bulb	Left Olfactory bulb
Right frontal lobe	Left frontal lobe	Right temporal lobe	Left temporal lobe	Cerebellum	



Part II: Matching: Functions and lobes. Note: Some answer choices can be used more than once.

- | | |
|--|-------------------|
| 1. ____ A pair of nerves that input visual information | A. Optic Nerve |
| 2. ____ X-shaped structure where the optic nerve cross | B. Optic chiasm |
| 3. ____ A pair of nerves that input smells | C. Olfactory bulb |
| 4. ____ Occipital lobe | |
| 5. ____ Temporal lobe | |

Part III: Multiple choice:

1. ____ Why is labeling the lobes challenging to some people when viewing the brain from the bottom?
 - a. When labeling, there is no difference from the top view to the bottom view.
 - b. When labeling, the lobes are opposite because the brain is upside down.

2. ____ Where should the brain stem face when trying to accurately label the brain?
 - a. Away from you
 - b. Towards you
 - c. To the right
 - d. To the left