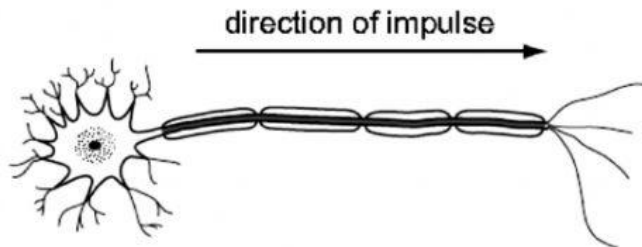


PAPER 2

CHOOSE THE CORRECT ANSWER:

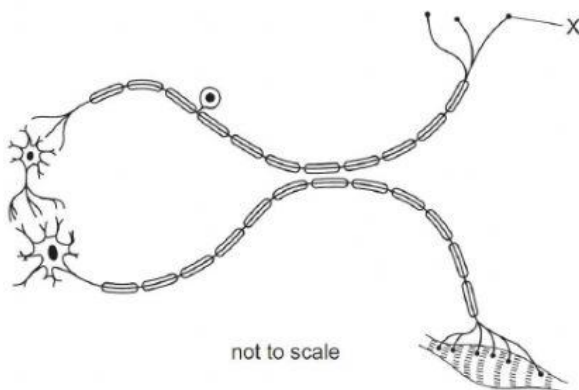
1. The diagram shows a neurons carrying an impulse.



Which row describes the type of neurone and the direction of impulse?

	Type of neurone	Direction of impulse
A	Motor	Towards the spinal cord
B	Motor	Away from the spinal cord
C	Sensory	Towards the spinal cord
D	Sensory	Away from the spinal cord

2. The diagram shows a reflex arc.



What is X?

- A a relay neurone
- B a synapse
- C the effector
- D the receptor

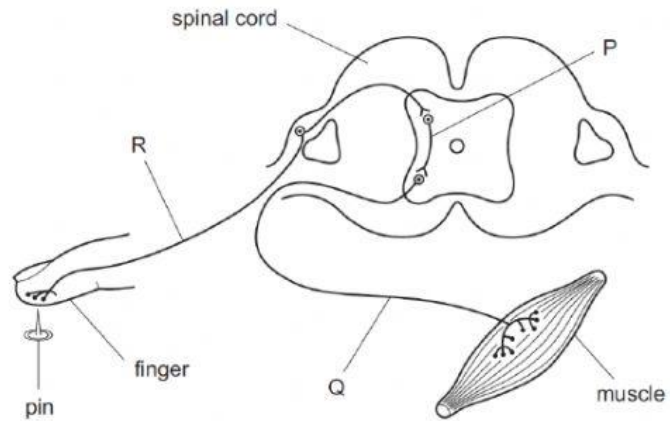
3. What shows the order in which these structures are involved in a reflex action?

- A effector → motor neurone → relay neurone → sensory neurone → receptor
- B effector → sensory neurone → motor neurone → relay neurone → receptor
- C receptor → sensory neurone → relay neurone → motor neurone → effector
- D receptor → motor neurone → sensory neurone → relay neurone → effector

4. In reflexes, which term describes light, heat and sound?

- A effectors
- B impulses
- C receptors
- D stimuli

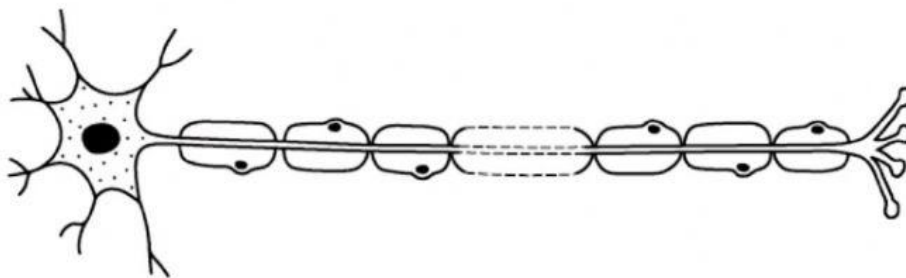
5. The diagram represents a simple reflex arc.



What is the sequence of nerve cells through which an impulse passes during a reflex action?

	first	→	last
A	P	Q	R
B	Q	R	P
C	Q	P	R
D	R	P	Q

6. The diagram shows a cell.



What type of cell is shown?

- A ciliated cell
- B motor neurone
- C relay neurone

D sensory neurone