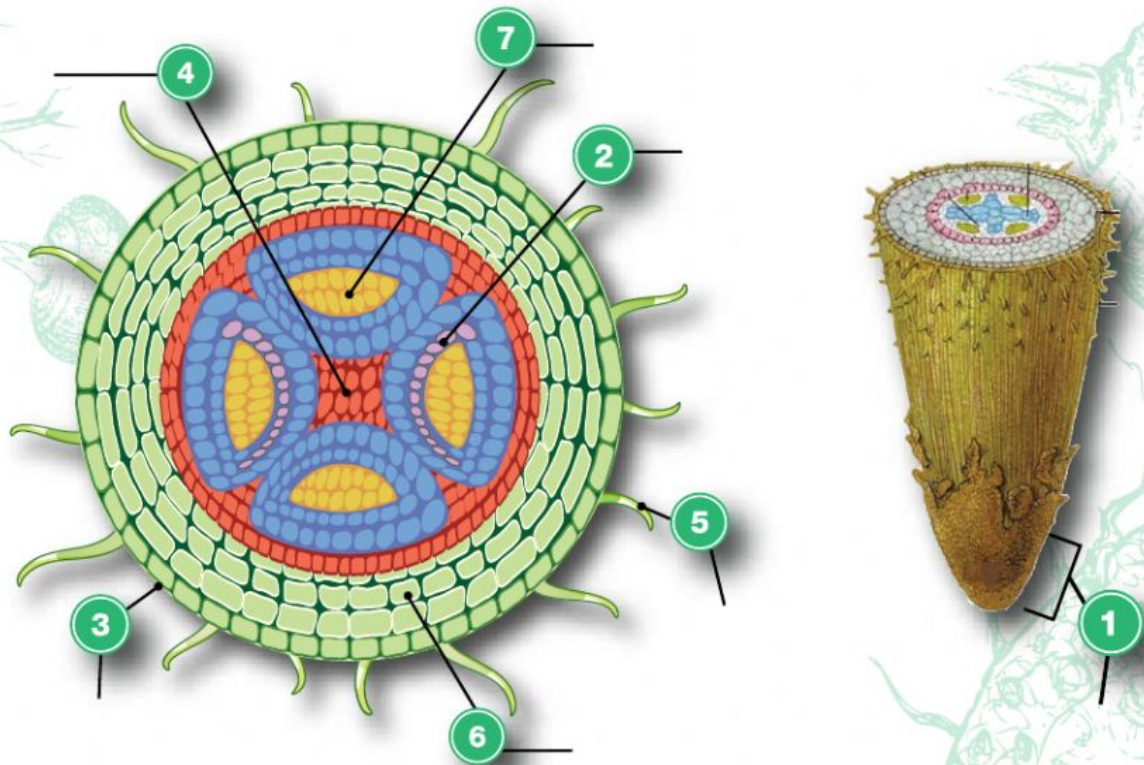


# Parts of a Root

**DIRECTIONS:** Read definitions 1 - 7 below that describe the function of each root part highlighted in yellow. Then drag and drop each correct part to the number that matches the its definition on the diagram. (For help you may reference your notes or Pg. A30 in our textbook)



**Cambium**   **Xylem**   **Phloem**   **Root Cap**   **Cortex**   **Epidermis**   **Root Hairs**

1. The strong protective covering of a roots tip
2. The wall that separates the xylem and phloem
3. The outermost layer of a root, stem or leaf
4. The tissue where water/minerals moves up the plant
5. Threadlike parts on the surface of the root
6. The food storage center of a root
7. Structure that water/minerals/food flows downward in