



SD AL FALAH DARUSSALAM 2 (ICP)
Penilaian Akhir Semester (PAS)
Tahun Pelajaran 2020 - 2021

1

Full Name:

Subject :

Class :

Attendance List:

Date :

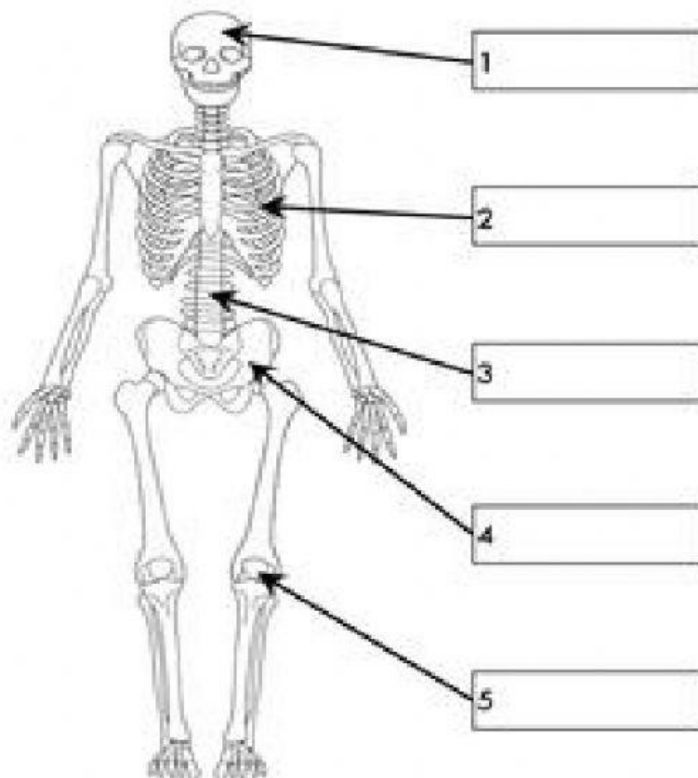
Please Retype This Sentence: "I am honest Kid. I'll do the best for Allah"

﴿Bismillaahirrahmaanirrahim﴾

Answer the questions based on the instruction given.

Match up the following bones with the correct box in the diagram below to answer number 1 – 5.

| Knee Cap | Ribs | Skull | Backbone | Pelvis |
|----------|------|-------|----------|--------|
|----------|------|-------|----------|--------|

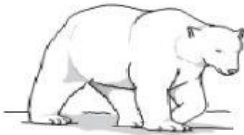


6. Animals are adapted to the environments in which they live.

Match each animal to the correct adaption.

animal

adaptation



has sharp teeth to kill other animals



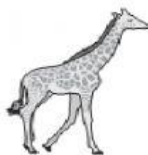
has long legs to reach leaves on tall trees



has thick fur to keep warm

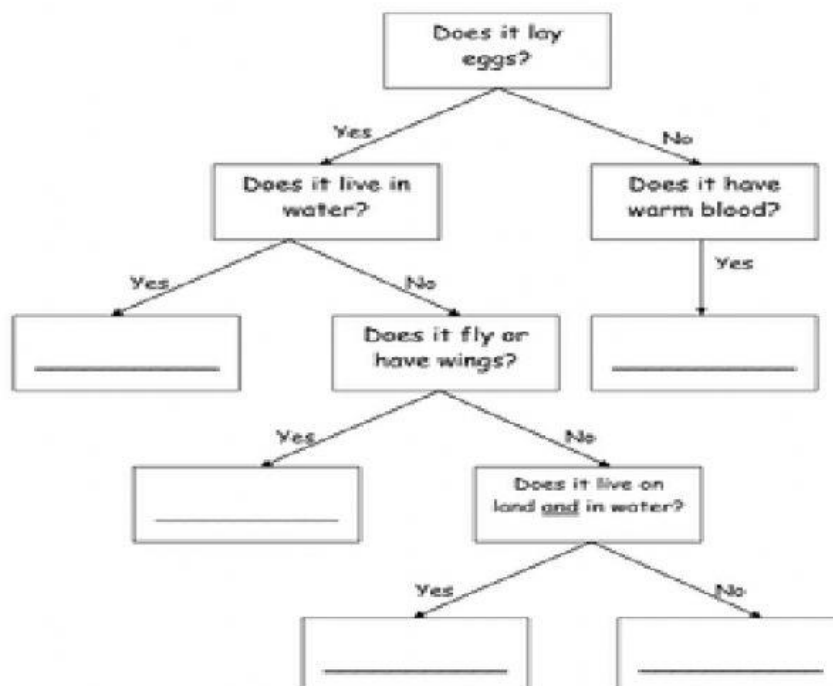


has fins to move in water

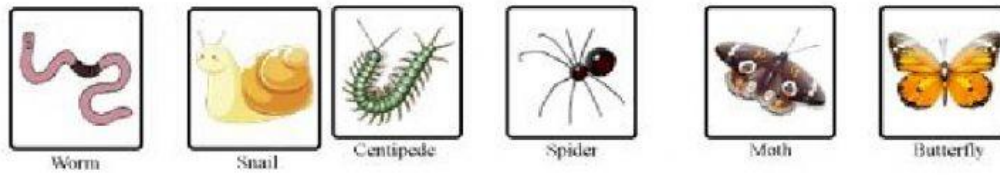


has wings to fly in the air

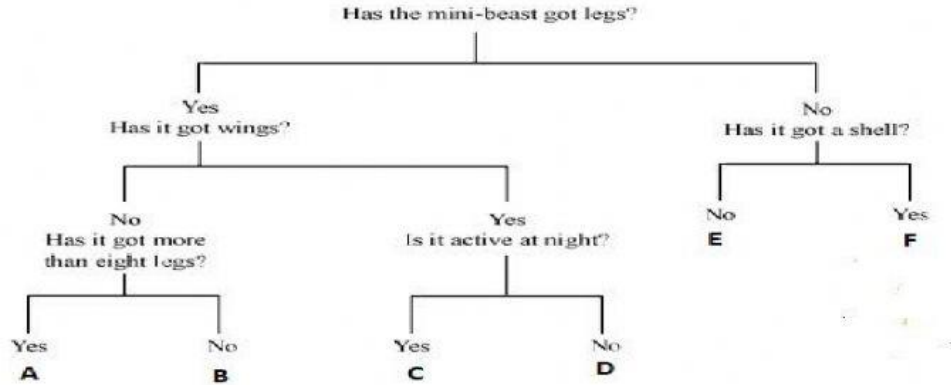
7. Complete the missing boxes in this identification key with **mammal**, **fish**, **bird**, **reptile** or **amphibian**.



8. Zayna wants to identify six animals.



This digram can be used to identify these animals.



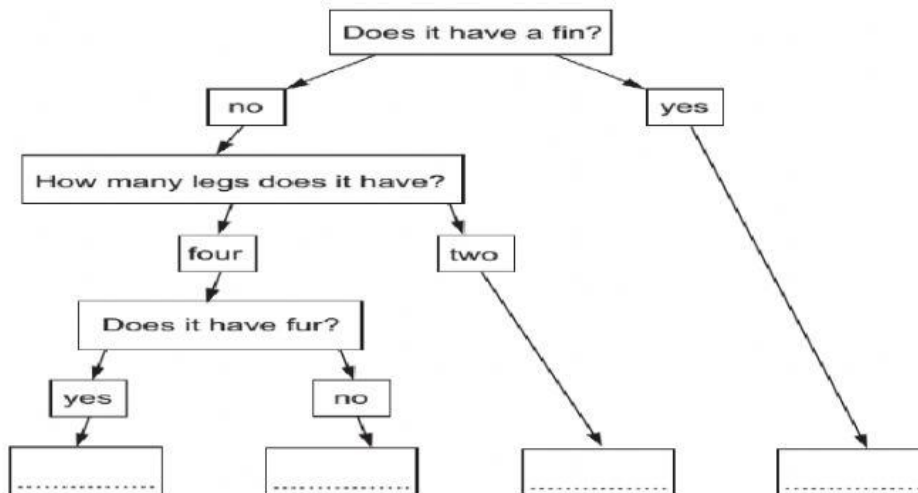
Use the key to identify the animals.

- | | |
|---------|---------|
| A. | D. |
| B. | E. |
| C. | F. |

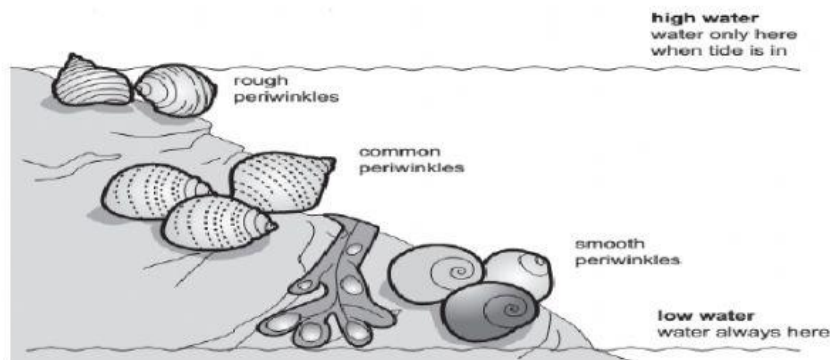
9. Nindy wants to identify four animals.



Use the key below to identify the four animals. Write the correct letter in each box on the key.



10. Class 4 look at periwinkles (small sea snails) on a tidal seashore. The water level rises and fall. They find different sorts of periwinkles in certain places on the seashore. This picture shows what they find.



- (a) Which periwinkle is most suited to being out of water? Choose one answer.

1. rough periwinkle
2. common periwinkle
3. smooth periwinkle

- (b) Which periwinkle is least suited to being dry? Choose one answer.

1. rough periwinkle
2. common periwinkle
3. smooth periwinkle

11. Match each word to its meaning.

Habitat

Surroundings

Environment

Making the environment dirty

Identification key

Using something again

Reuse

A way of sorting animals

Pollution

Where an animal lives

12. Fill the gaps in these sentences. Use these words.

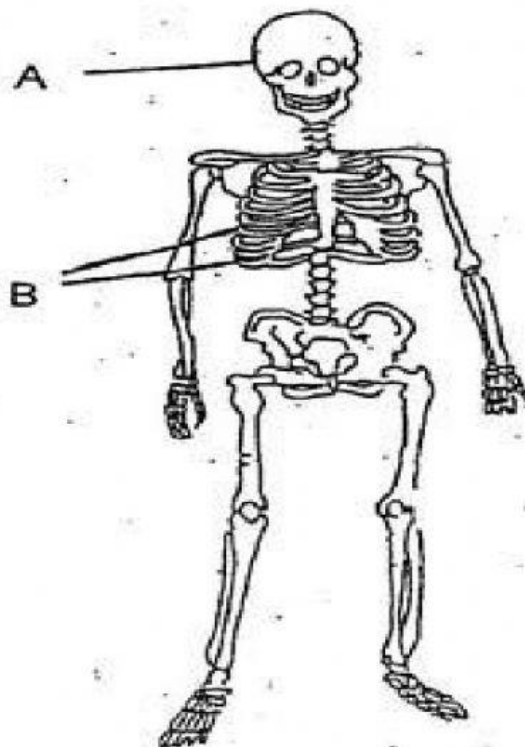
| Food | Adapted | Environment |
|------|---------|-------------|
|------|---------|-------------|

Animals are ... to help them to live in their habitats. If an animal's ... changes, it may change the way it behaves. Animals need a habitat where there is ...

13. Some learners were asked to count snails and note where they found them. Here are their result.

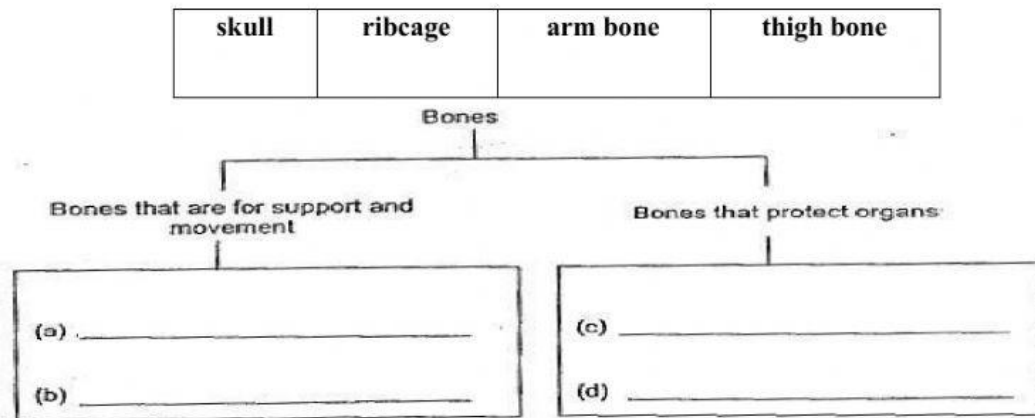
| Place we looked | Number of snails found in 1 min |
|-------------------------|---------------------------------|
| On the branch of a tree | 0 |
| Under a stone | 4 |
| In a bush | 2 |
| Under a log | 10 |

- a. Where were the most snails found? ...
- b. Where were the fewest snails found? ...
14. Look at the skeletal system of a man below.



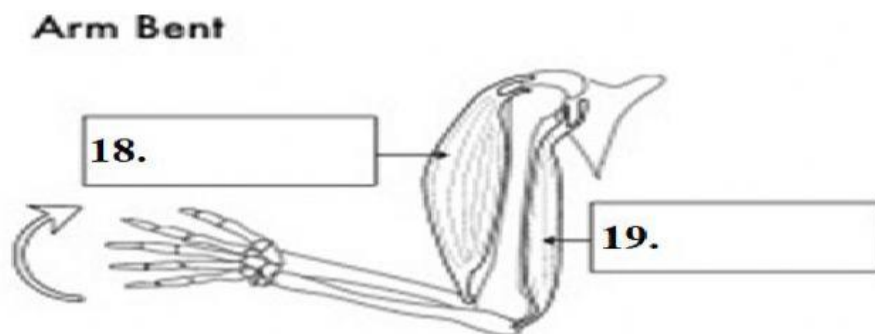
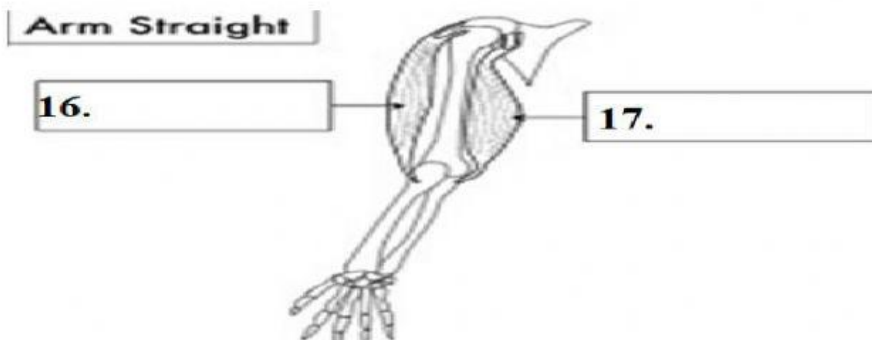
Parts A and B protect some of the organs in the body. Name one organ that each of these parts protects. A protects the The three organs protected by **part B** are kidney, hearth and ...

15. Fill in the blanks below with the most suitable answer from the box.



For numbers 16 – 19 fill the four boxes with one of these labels.

| | | | |
|------------------|----------------|---------------|-----------------|
| Tricep contracts | Tricep relaxes | Bicep relaxes | Bicep contracts |
|------------------|----------------|---------------|-----------------|



20. Classify each animal based on their skeleton, “**vertebrates** or **invertebrates**”.

- | | |
|---------------|---------|
| a. cow | [.....] |
| b. snail | [.....] |
| c. jelly fish | [.....] |
| d. cat | [.....] |
| e. butterfly | [.....] |
| f. goat | [.....] |

21. Match each word to its meaning.

Drugs that make our bodies better

Drip

A piece of equipment that put medicines directly into our blood

Medicines

When a doctor says what medicine a sick person must have

Prescribe

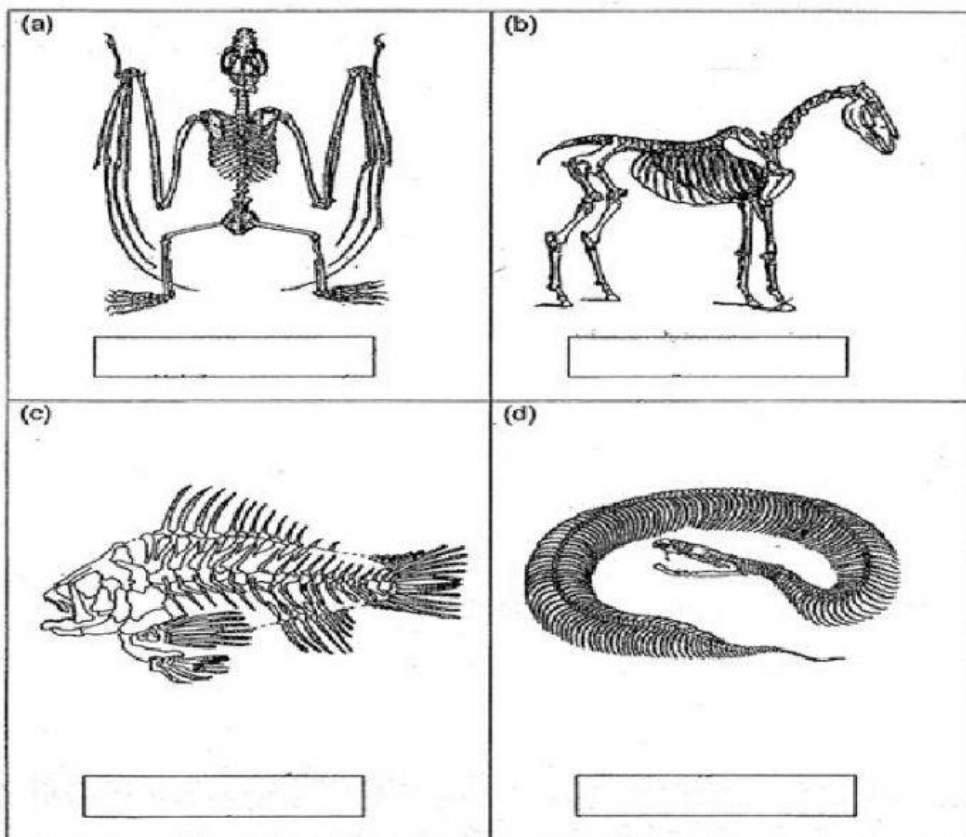
Signs of an illness

Symptoms

22. Study the skeletal structure of these 4 organisms and match them according to the way they move. Fill in the blanks with a word from the box using each word only once.

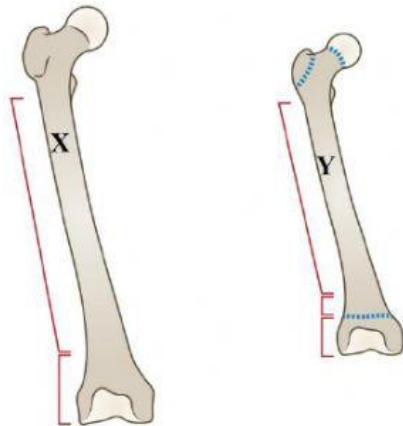
Swim Fly Walk Slither

All the bones of an animal make up the skeleton as shown.



Look at the picture to answer number 23 and 24.

The pictures show the thigh bone of Nisa and her teacher.



23. The thigh bone belongs to Nisa is

24. The thigh bone belongs to her teacher is

25. Look at the picture.



a. What does X in the picture show?

b. What can be used to take this picture?

26. Identify these statements with "reduce, reuse and recycle".

a. Buy the things that we need and less of the things that we want. [.....]

b. Bring reusable bag when go shopping. [.....]

c. Sort rubbish by the type. [.....]

27. Two ways camel adaptation are

a. White fur to blends in with snow and ice

b. The nostril can be closed to block sand blowing

c. Sharp claws to catch other animals

d. The humps to store fat

e. Streamlined body shape

28. The function of streamlined body shape in the fish is

- a. Reduce water resistance
- b. Help to walk or skip on land
- c. Feed and catch other animals

29. Two ways polar bear adaptation are

- a. White fur to blends in with snow and ice
- b. The nostril can be closed to block sand blowing
- c. Sharp claws to catch other animals
- d. The humps to store fat
- e. Streamlined body shape

30. It has webbed feet. These is the adaptation of

- a. Duck
- b. Eagle

﴿Alhamdulillahirobbil aalamiin﴾