

CENTRAL NERVOUS WORKSHEET.

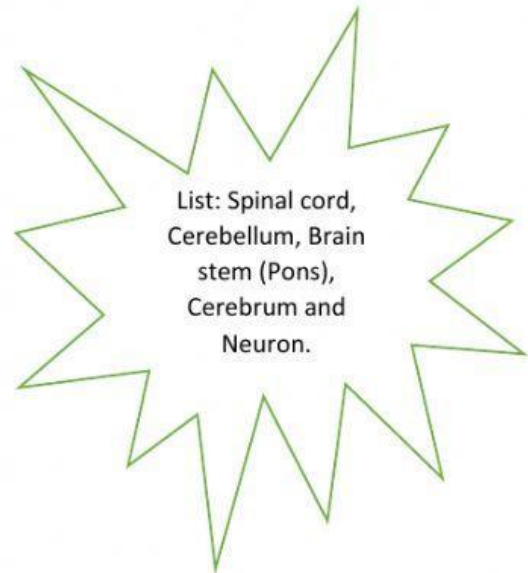
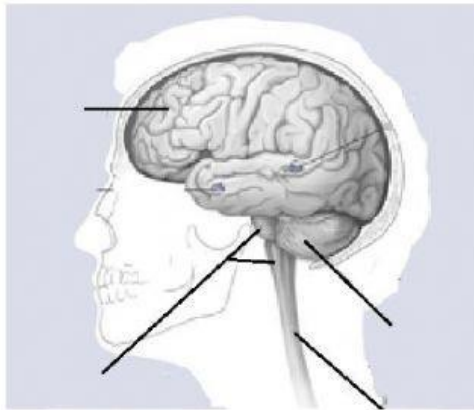
Name: _____

Date: _____

1. Drag and drop the words from the list to fill in the blanks.

The central nervous system (CNS) coordinates and controls all activities of the body. It allows us to _____ rapidly to stimuli, or changes in the _____ that causes a _____. The brain has _____ main parts. It is enclosed in a _____. The spinal cord is protected by the _____.

2. Label the parts of the diagram below.



3. True or false on the line next to the statement.

- a) _____ The cerebellum is the largest part of the brain.
- b) _____ The cerebrum controls all the involuntary actions.
- c) _____ Another word for brain stem is medulla oblongata.
- d) _____ If a person has damage to the cerebrum, they cannot remember.
- e) _____ The left side of the brain controls the right side of the body.
- f) _____ When blood flows to the brain a stroke occurs.
- g) _____ Drugs and alcohol can affect the cerebrum and the cerebellum.
- h) _____ The middle of the cerebrum controls memory.