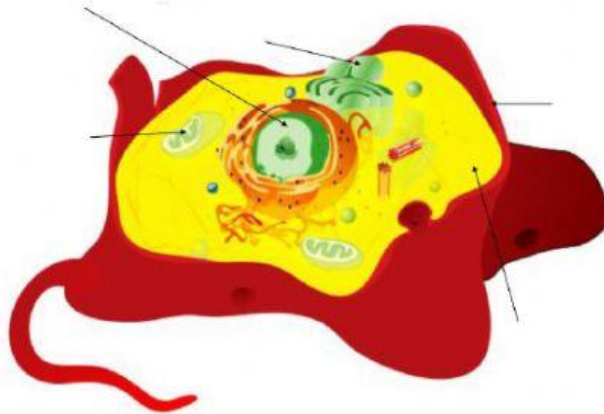


ANIMAL CELL WORKSHEET.

Name: _____

Date: _____

1. Label the parts of an animal cell using the elements from the list below.



List: nucleus, cytoplasm, mitochondrion, vacuole, cell membrane, ribosome.

2. Match the different parts of the cell with the corresponding function.

<u>Organelle</u>	<u>Function</u>
vacuole	Controls all activities of the cell, contains chromosomes for passing on traits from parent to child and it's like the "brain" of the cell.
Cell membrane	This part releases energy for the cell. It is consider the powerhouse of the cell.
Cytoplasm	Holds the cell together and controls what enters and leave the cell. <i>it selects what can pass through its walls.</i>
Mitochondrion	This is a jelly-like material where all the other cell organelles rest.
Nucleus	

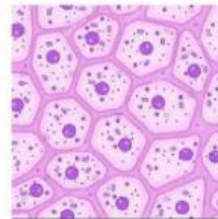
3. The diagram shows specialize cells found in the human body.



A



B



C

3.1 Which cell carries out the following functions?

- a) Contains hemoglobin:
- b) Used in fertilization:
- c) Make up the tissue that covers our bodies:
- d) Carries oxygen:
- e) Which cell, when mature, lacks a nucleus?

4. Complete the chart to show the correct order in which the human body is organized.

