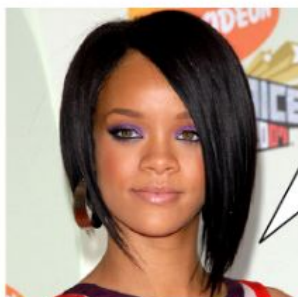


The Comparative of Superiority with...Rihanna!



Hi! My name is Rihanna.

I'm from Barbados and I'm a singer.

I hope you enjoy learning how to use the Comparative of Superiority.

:Remember: we use the Comparative of Superiority to put something or someone in evidence comparing the thing/person with another one.

Small adjective + **er** than..... Ex: small....It's smaller than ...

More+ Long adjective +than Eg: She's **more** beautiful than

A-Use the Comparative of Superiority

1. Rihanna is _____ (**famous**) than her brothers.
2. Her looks is _____ (**modern**) now than before.
3. She is _____ (**rich**) than her ex-boyfriend, Chris Brown.
4. Rihanna is _____ (**beautiful**) than Madonna.
5. Rihanna is _____ (**young**) and _____ (**tall**) than Beyoncé.
6. Her songs are _____ (**successful**) than Beyoncé's ones.

B. Now look at the following pictures:



Picture 1



Picture 2

1. Rihanna has _____ (**long**) hair in Picture 1 than in Picture 2.
2. Rihanna looks _____ (**sophisticated**) in picture 1 than in picture 2.
3. She looks _____ (**old**) in picture 1 than in picture 2.
4. Her hair is _____ (**dark**) and _____ (**short**) in picture 2 than in picture 1.

C. Choose the appropriate option:

1. Rihanna's voice is _____ more powerful/powerfuller than her best friend's.
2. Her haircuts are _____ varied/more varied than most singers'.
3. She is _____ happier/more happy now than before.
4. She looks _____ slimmer/more slim in real life than in her videoclips.
5. Rihanna is more funny/funnier than her best friend.
6. Her fans are more dedicated/dedicateder than Chris Brown's.



As you see, the Comparative of Superiority is easy!

If the adjective is **short** you must add-**er** to it .

For example ,I am **shorter** than Jay Z.

If the adjective ends with **y** it changes into **i** and you must add as usual the particle-**er**

If the adjective is long you just put **more** before it.

Eg? Jay Z is more famous than me.