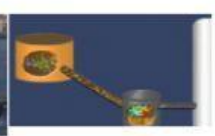
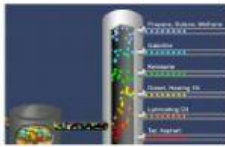


FROM OIL TO PLASTIC (Part 1: 0'00" - 2'22')

BEFORE WATCHING THE VIDEO

1. Drag and drop the terms on the images.



--	--	--	--	--	--

platform

tanker
/tanka/

refinery
/rifainari/

distillation
/distileichon/

distillation
tower

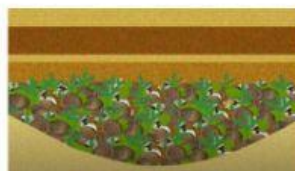
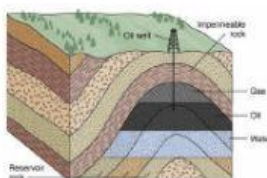
furnace
/fe^rnes/



<https://youtu.be/IwdUwffecsM>

AFTER WATCHING THE VIDEO

2. Match the concepts with the images.



--	--	--	--

remains of plants and
animals

under intense pressure
and high temperatures

within the Earth

Fossil fuels: natural
gas, coal and oil

3. Listen and choose the correct image.



PELLETS



FURNACE



HDPE



TO PUMP



SORT LINE



PETE



PLATFORM



REMAINS



REFINERY



RECYCLING TRUCKS



BALE



DISTILLATION



TANKER



SHREDDED BOTTLES



THROWN AWAY

4. Describe the process that is carried out to extract petrol beneath (dentro de) the Earth... by using the following pieces.

SUBJECTS	VERBS	OBJECTS
Crude oil	are transported	to the surface.
Holes	is pumped out	beneath the Earth.
Crude oil	are identified	into the ground.
Barrels of crude oil	are drilled	in the distillation towers.
Sources of oil	is distilled	to the refinery.

