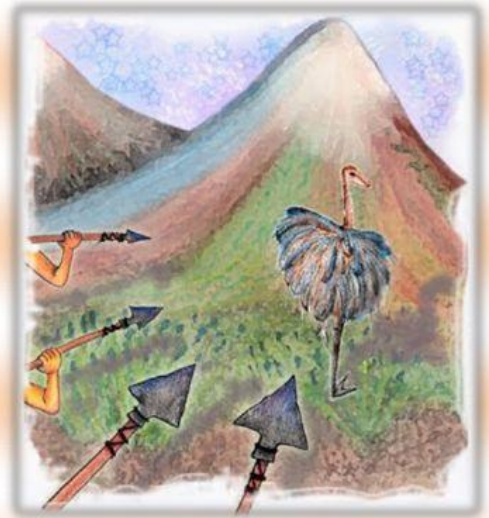


# The Legend of the ñandú

Click on the correct answer:

1. Where is the tribe from?
  - a. Cuyo region.
  - b. Patagonia region.
2. What is the conflict?
  - a. They don't have food.
  - b. They are going to be attacked.
3. What are the enemies like?
  - a. Friendly.
  - b. Ferocious.
4. Who offers to take the message?
  - a. An old man.
  - b. A young man.



5. Who accompanies the man?
  - a. His wife.
  - b. His sister.
6. What is the journey like?
  - a. Very short.
  - b. Really long.
7. Where do they find the enemies?
  - a. Near the ocean.
  - b. Near the mountains.
8. What is their enemies' reaction?
  - a. They chase the couple.
  - b. They kill the couple.
9. What happens to the couple?
  - a. They become big birds.
  - b. They become insects.
10. What happens to the tribe?
  - a. They are attacked.
  - b. They defend themselves.