



# THE HAPPY PRINCE

OSCAR WILDE

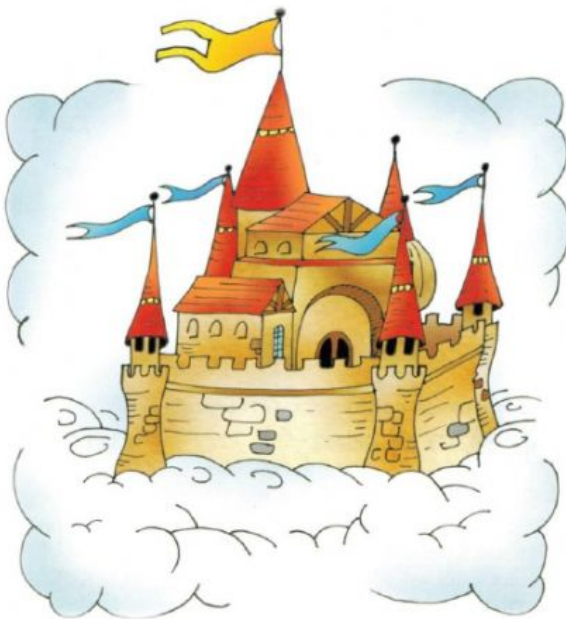
Click on the correct answer, A or B?:



Where is the statue of the Prince?

**A – It is in a park.**

**B – It is in a square.**



Where does the Prince live?

**A – In a house.**

**B – In a castle.**





How does the Prince feel?

**A – Very happy.**

**B – Extremely sad.**



How does the Prince feel as a statue?

**A – Very sad.**

**B – Really angry.**



What is the problem?

**A – Animals are in danger.**

**B – People are very poor.**



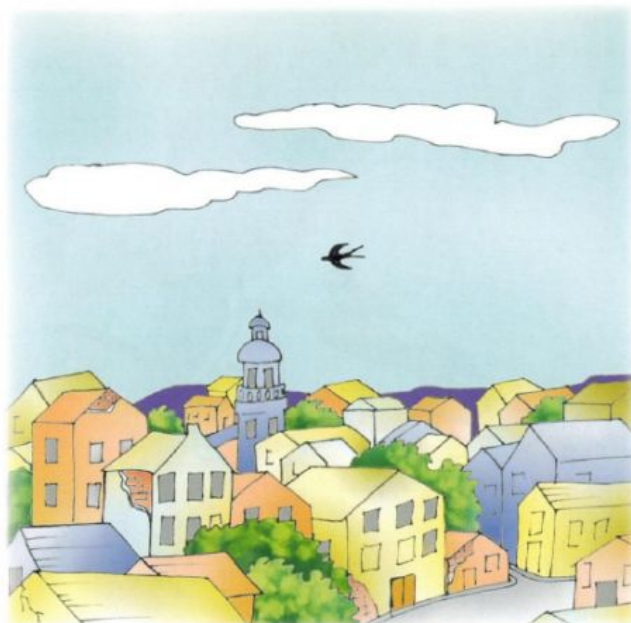




Why is the swallow a good friend?

**A – It helps the Prince.**

**B – It goes with its friends.**



Where does the swallow fly?

**A – To the north.**

**B – To the south.**



How does the Prince help poor people?

**A – He gives them money.**

**B – He gives them its gold.**





What happens to the swallow?

**A – It stays with the statue.**

**B – It flies to Egypt.**



What happens with the statue?

**A – It is melted.**

**B – It is painted.**