

Weather

Read and match.

It's cloudy.

It's windy.

It's rainy.

It's sunny.

It's cold.



It's stormy.

It's hot.

It's snowing.

It's partly cloudy.

Fill in the words.



It's

_____.



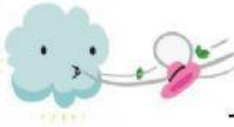
It's

_____.



It's

_____.



It's

_____.



It's

_____.



It's

_____.



It's

_____.



It's

_____.

Wordsearch



cloudy
warm
rain



hot
foggy
windy
cold
snow
sunny



C	L	O	U	D	Y	N	S	W	S
Z	H	L	X	X	W	A	R	M	U
T	E	T	J	M	T	J	S	S	N
P	H	B	R	A	I	N	C	N	N
Z	V	B	F	H	C	W	G	O	Y
U	H	A	O	T	S	I	M	W	H
K	O	J	G	G	S	N	C	V	D
P	T	O	G	I	J	D	O	Y	U
D	H	M	Y	S	P	Y	L	O	U
O	K	W	W	M	C	Q	D	N	W