

Name: _____

Date: _____

**Science
Cells Test**



(A) Choose the correct answer. (5mks)

1. What is the most basic unit of all living things?
(a) cells (b) organs (c) systems (d) tissues
2. Which part of the cell is like the "brain"?
(a) cell wall (b) cytoplasm (c) nucleus (d) vacuole
3. Plants and animal cells share some of the same structures. Which structure below can only be found in plant cells?
(a) cell wall (b) cytoplasm (c) nucleus (d) vacuole
4. Diara wants to see the cell wall of a plant cell. Which instrument should she use?
(a) balance (b) graduate cylinder (c) microscope (d) telescope
5. Levon is observing animal cells. He is looking at the structure that controls what enters and leaves the cells. Which structure is Levon observing?
(a) cell membrane (b) cytoplasm (c) nucleus (d) vacuole
6. Which life process involves the production of off springs?
(a) reproduction (b) breathing (c) movement (d) growth
7. Which life process involves a change in position or location?
(a) reproduction (b) breathing (c) movement (d) growth

(B) Answer all questions.

8. Other than the vacuole, which **TWO** structures are found in both animal and plant cells? Select **TWO** answers. (2mks)

9. Name the part of the cell that:

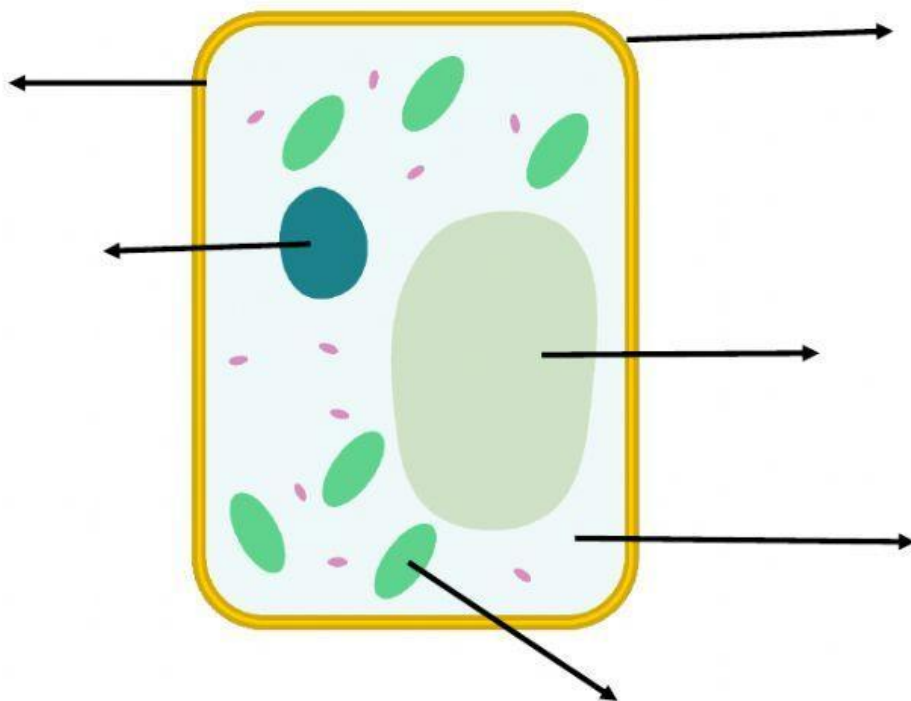
(a) contains chlorophyll which allows plants to make their own food

_____ (1mk)

(b) is a jelly-like substance _____ (1mk)

(C) Label the plant cell below. Use the word bank. Drag the answer to the correct part. (6mks)

chloroplast cytoplasm cell membrane nucleus vacuole cell wall



10. Students observed a skin cell from both an onion and a human being under the microscope. Explain how you would be able to tell which cell came from an onion and which came from a human being. (3mks)