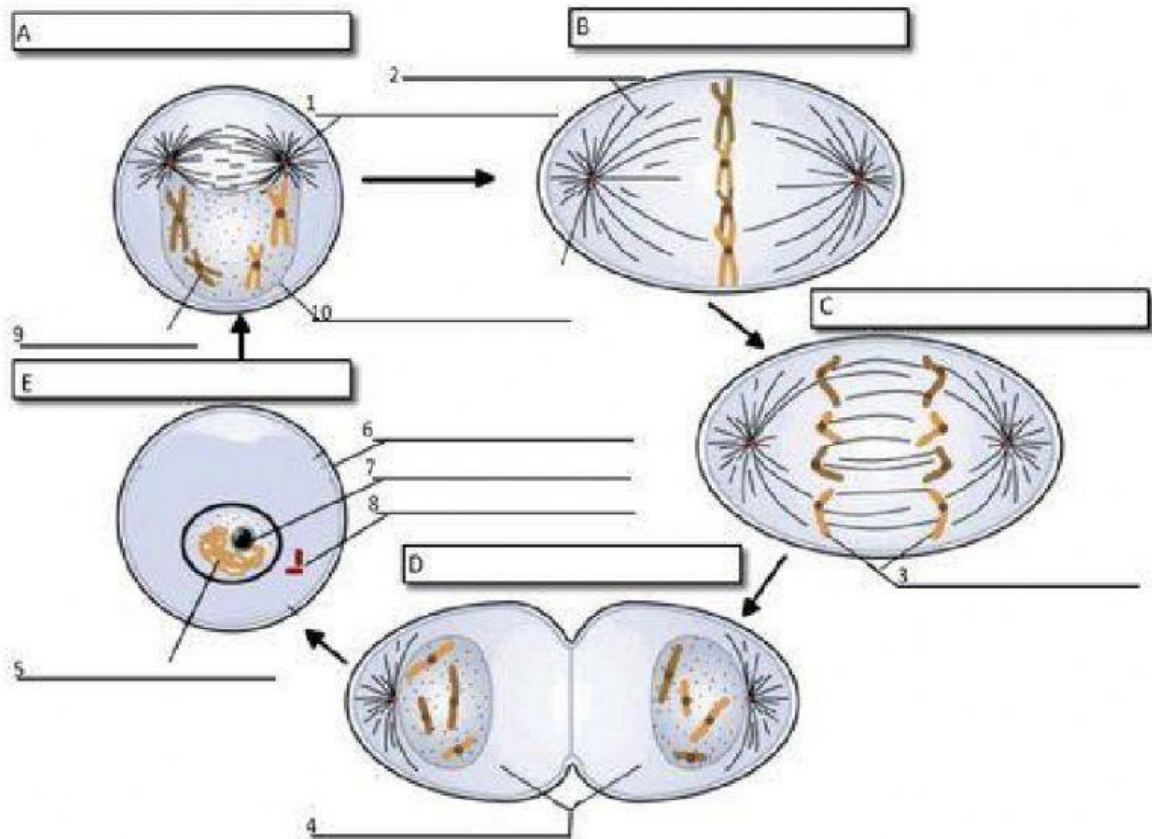


1. Label the process of mitosis in details with dropping the descriptions into its right places. \3 points\



Answers: spindle connects to each centromere of chromosome with the poles of the spindle, telophase, nuclear envelope breaks down, prophase, forms equational plate, the cytoplasm pinches in half, centrosomes separate and move to opposite sides of the cell, anaphase, spindle begins to form, cytokinesis, metaphase, the chromosomes line up across the center of the cell,

Explain the structure of monosaccharides. \2 points\

Outline the differences between catabolism and anabolism. Bring 2 examples for each. \5 points\

Discuss the differences of adhesion and cohesion in plant leaves. \5 points\