

SCIENCE: THE HUMAN SYSTEMS

DATE: COURSE: NAME:

- 1 Match column A with column B. Write the letter of the correct match on the blank. Use CAPITAL letter.

_____ 1.	digestive system	A.	removes extra water and waste materials from our body
_____ 2.	skeletal system	B.	allows us to move different parts of our body
_____ 3.	respiratory system	C.	protects the delicate organs in our body
_____ 4.	circulatory system	D.	takes air into and removes air out of our body
_____ 5.	nervous system	E.	breaks down food into substances our body can use
_____ 6.	muscular system	F.	made up of parts that help move substances to all parts of our body
_____ 7.	urinary system	G.	the control center of our body

- 2 Name the organ system where the body part belongs. Write the beginning letter of the correct organ system on the blank.

M S U	muscular skeletal urinary	D R	digestive respiratory	C N	circulatory nervous
_____ 1.	rib		_____ 11.	large & small intestine	
_____ 2.	bladder		_____ 12.	ureters	
_____ 3.	brain		_____ 13.	anus	
_____ 4.	muscles		_____ 14.	spinal cord	
_____ 5.	nerves		_____ 15.	stomach	
_____ 6.	skull		_____ 16.	blood vessels	
_____ 7.	heart		_____ 17.	mouth	
_____ 8.	kidneys		_____ 18.	backbone	
_____ 9.	gullet		_____ 19.	windpipe	
_____ 10.	lungs		_____ 20.	nose	

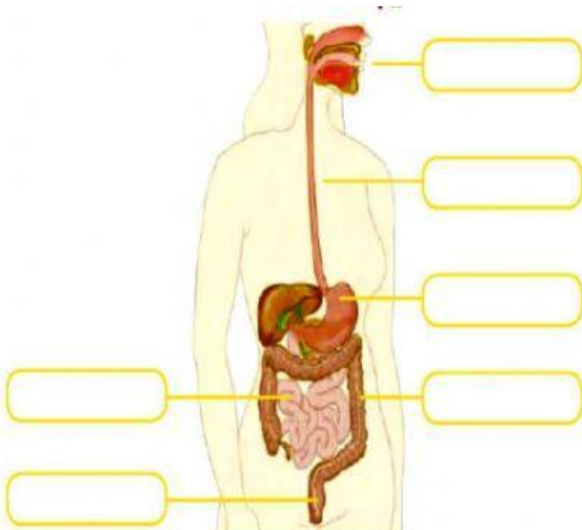
TEACHER: MSc. Boris Guerra R.

3

CHOOSE THE CORRECT ANSWER

1. Passage by which food goes from mouth to stomach
 - a. mouth
 - b. gullet
 - c. large intestine
 - d. small intestine
2. Digests and absorbs food
 - a. mouth
 - b. gullet
 - c. large intestine
 - d. small intestine
3. Absorbs water from remaining indigestible food matter and pass useless waste material from the body.
 - a. mouth
 - b. gullet
 - c. large intestine
 - d. small intestine
4. Part of the urinary system that removes waste products from the blood and secrete urine.
 - a. kidney
 - b. urethra
 - c. ureters
 - d. bladder
5. Duct/tube from kidney to bladder.
 - a. kidney
 - b. urethra
 - c. ureters
 - d. bladder
6. Sac in which urine collects in the body.
 - a. kidney
 - b. urethra
 - c. ureters
 - d. bladder
7. Duct by which urine is discharged.
 - a. kidney
 - b. urethra
 - c. ureters
 - d. bladder
8. This part of our body let's our brain know activities inside and outside our body.
 - a. blood vessels
 - b. brain
 - c. nerves
 - d. spinal cord

4 LABEL THE DIGESTIVE SYSTEM, READ, DRAG AND DROP THE ANSWERS TO THEIR CORRECT SPACES.

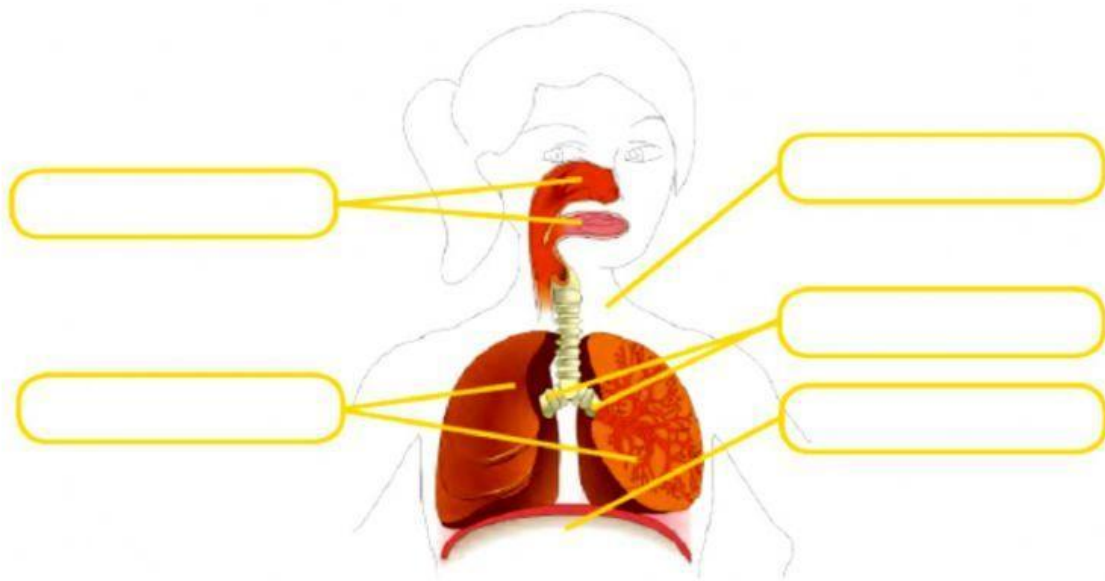


The digestive system is made up of six organs, they are the:

1. **Mouth:** food enters our body through our mouth.
2. **Oesophagus:** a long tube between our mouth and the stomach.
3. **Stomach:** it is like a bag and it secretes gastric juice, the stomach receives food from the oesophagus and mixes it with this gastric juice.
4. **Intestine:** a long tube. It is composed of two parts:
 - Small intestine: it is about seven metres long. The small intestine absorbs the nutritional substances.
 - Large intestine: it is about one metre and a half long. It takes the bad substances from our body.
5. **Anus:** it is at the end of the large intestine. Faeces are eliminated through the anus.

TEACHER: MSc. Boris Guerra R.

5 LABEL THE RESPIRATORY SYSTEM, CHOOSE THE CORRECT ANSWER.



6.- Write. Listen and check.



Air enters our body through our and mouth. It through the nostrils. It goes down through the and after goes to the and into the Finally, oxygen goes to our When we breathe, we can differentiate two: inhalation, our lungs with air, we take oxygen from the atmosphere and, air leaves our lungs, giving off carbon dioxide.

7.- Find the circulatory organs.



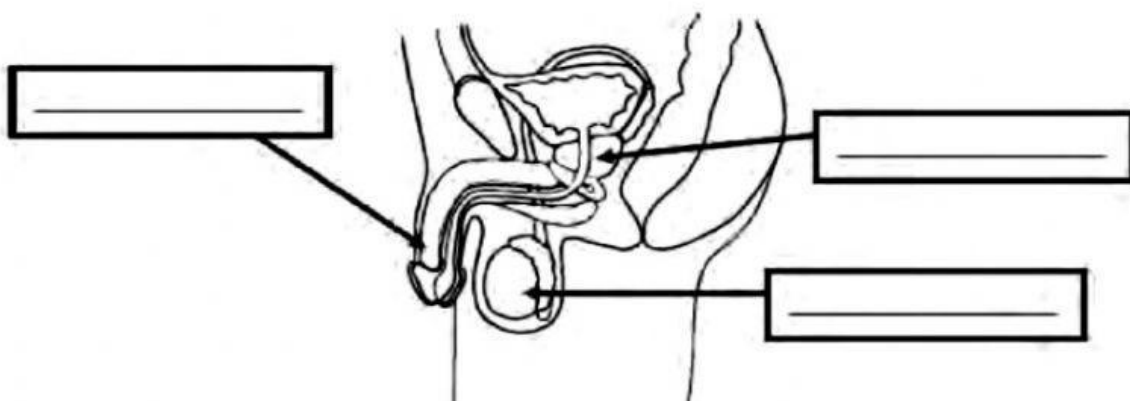
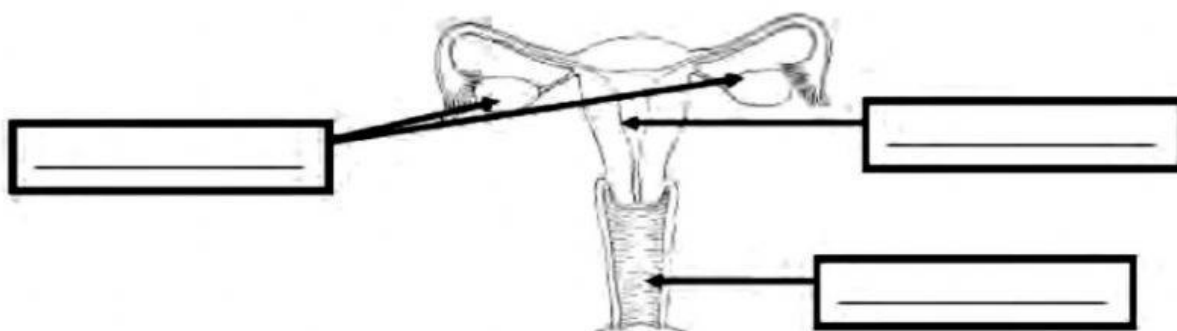
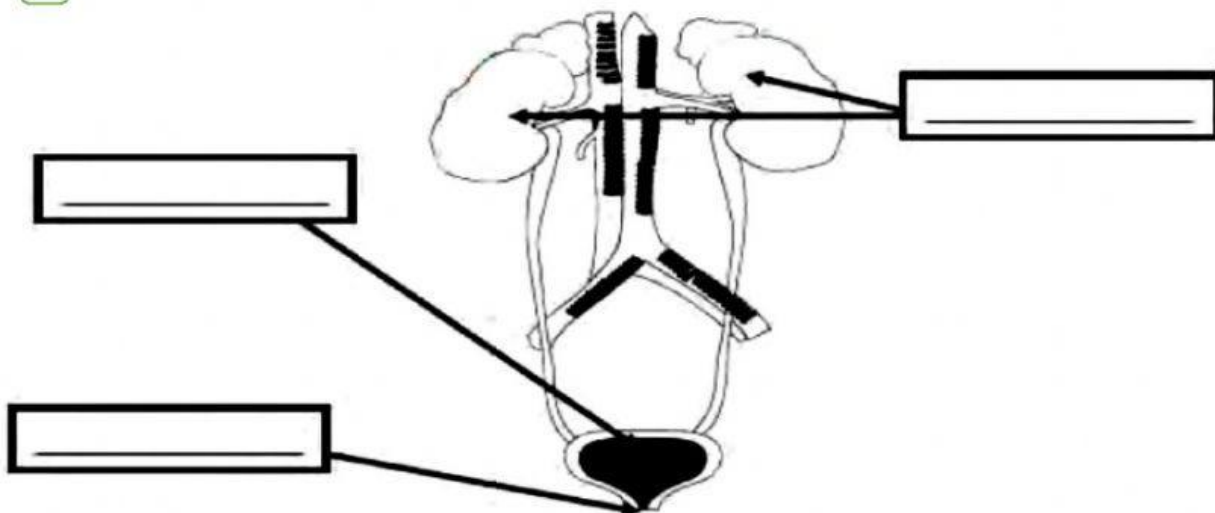
Y	A	N	A	S	L	H	E	A	R	T	A
J	R	M	N	T	V	V	I	B	U	I	L
T	T	I	B	D	F	O	K	U	Y	E	G
H	E	O	L	D	K	O	E	U	H	Z	W
V	R	U	K	H	W	T	R	J	C	L	B
K	I	B	Y	C	B	K	G	P	M	J	K
V	E	N	M	L	O	D	O	M	Q	W	E
G	S	E	I	R	A	L	L	I	P	A	C
D	F	J	O	U	Q	S	A	H	Y	E	P
S	T	M	P	L	A	X	Z	V	O	I	M

TEACHER: MSc. Boris Guerra R.

ACTIVITIES



8 - COMPLETE WITH THE CORRECT PARTS



9 - Listen and tick the correct answer. What is it?



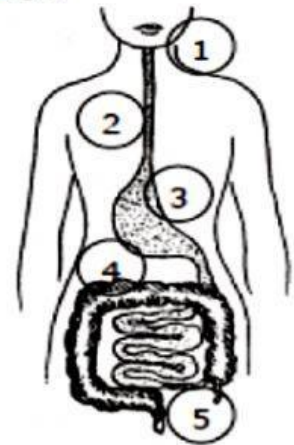
- | | |
|---------------------------------------|---------------------------------------|
| a) <input type="checkbox"/> Kidneys | <input type="checkbox"/> Ovaries |
| b) <input type="checkbox"/> Excretion | <input type="checkbox"/> Reproduction |
| c) <input type="checkbox"/> Men | <input type="checkbox"/> Women |
| d) <input type="checkbox"/> Bladder | <input type="checkbox"/> Teste |
| e) <input type="checkbox"/> Penis | <input type="checkbox"/> Vagina |
| f) <input type="checkbox"/> Urine | <input type="checkbox"/> Uterus |

TEACHER: MSc. Boris Guerra R.

10 - Listen and number the digestive process.



- ☐ The parts of food that we do not need go into the large intestine.
- ☐ The food goes down the oesophagus and goes to the stomach.
- ☐ Digestion begins in the mouth. Our teeth cut and chew the food.
- ☐ They are transformed into faeces and they are expelled through the anus.
- ☐ In the stomach, the food is mixed with a liquid (gastric juice).
- ☐ In the small intestine, the food is divided into nutritional substances that our body needs.
- ☐ Our tongue mixes the food with saliva.



11 - Solve this crossword puzzle.

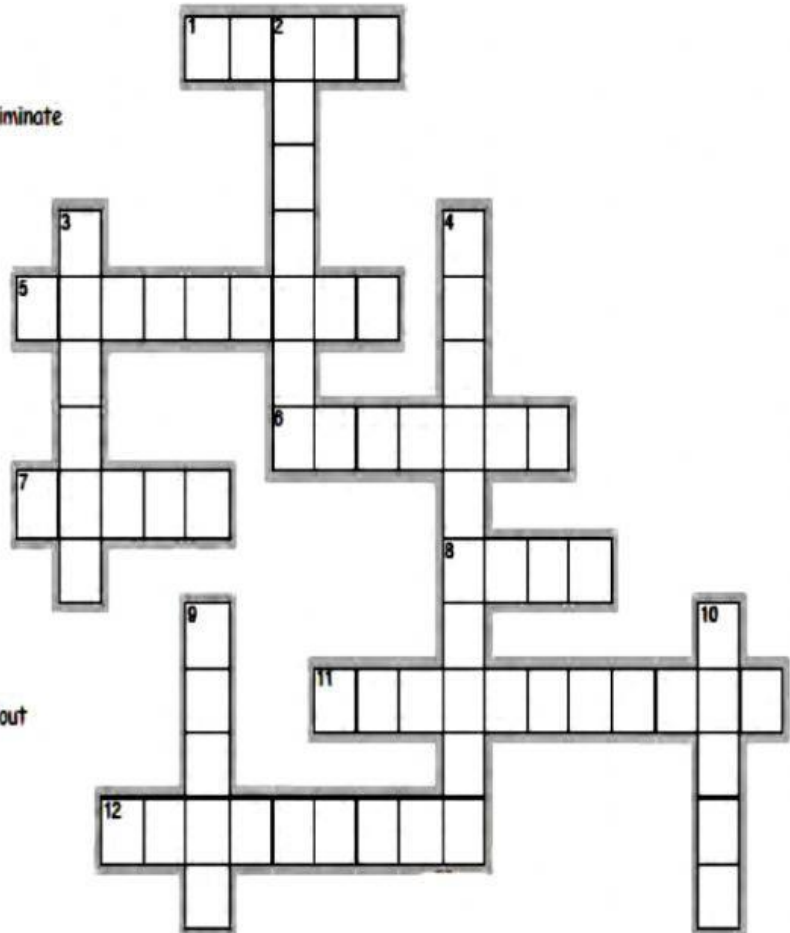


ACROSS

1. A very important red liquid in our body
5. Process through which we clean our blood and eliminate waste from our body.
6. Where the food is mixed.
7. Organ of the male reproductive system.
8. Faeces are expelled through it.
11. They connect veins and arteries.
12. The process by which food substances are changed into nutritional substances that our body needs.

DOWN

2. Organs of the female reproductive system.
3. Gas that we take in when we breathe.
4. When our lungs fill with air.
9. There are two of these and they are organs of our Respiratory System
10. An involuntary muscle that pumps blood throughout our body.



TEACHER: MSc. Boris Guerra R.