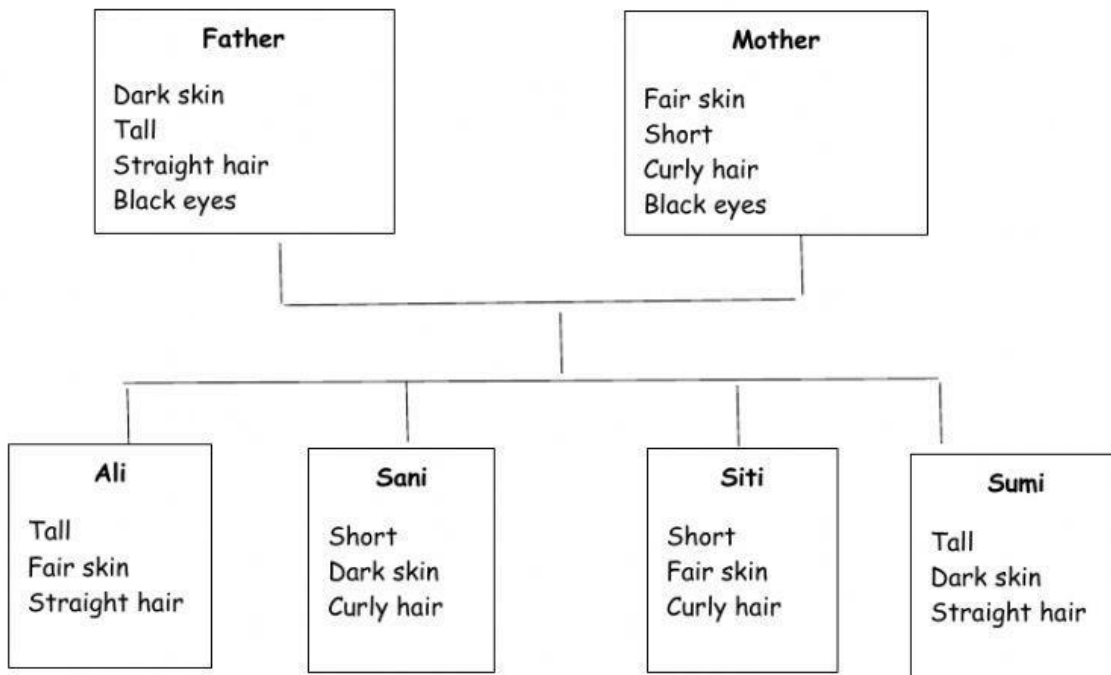


Based on the family tree below , state the traits inherited by the children of the couple below.



The traits inherited by their children are:

1. Ali inherits the \_\_\_\_\_ and \_\_\_\_\_ from father but inherits \_\_\_\_\_ from mother.

2. Sani inherits the \_\_\_\_\_ and \_\_\_\_\_ from mother but inherits \_\_\_\_\_ from father.

3. Siti inherits the height, skin colour and hair type from \_\_\_\_\_ but does not inherit traits from \_\_\_\_\_.

4. Sumi \_\_\_\_\_ the height, skin colour and hair type from father but \_\_\_\_\_ traits from mother.