



HOLY HEARTS SCHOOL

Varanasi

UKg (EVS)

Where do these animals live?

Match the animals to their homes

Ant hill



•

Hive



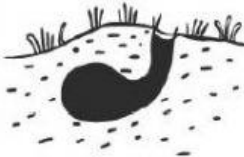
•

Web



•

Burrow



•

Kennel



•

Den



•

Nest



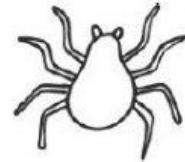
•

Cave



•

•



Spider

•



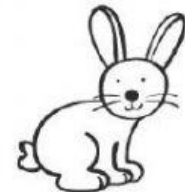
Ant

•



Bee

•



Rabbit

•



Lion

•



Dog

•



Bat

•



Bird

Match the animals with their sound.



Hen



Oink



Goat



Cluck



Goose



Neigh



Pig



Meow



Cat



Bleat



Horse



Cackle

Click on finish  Check my Answer and see your result.