

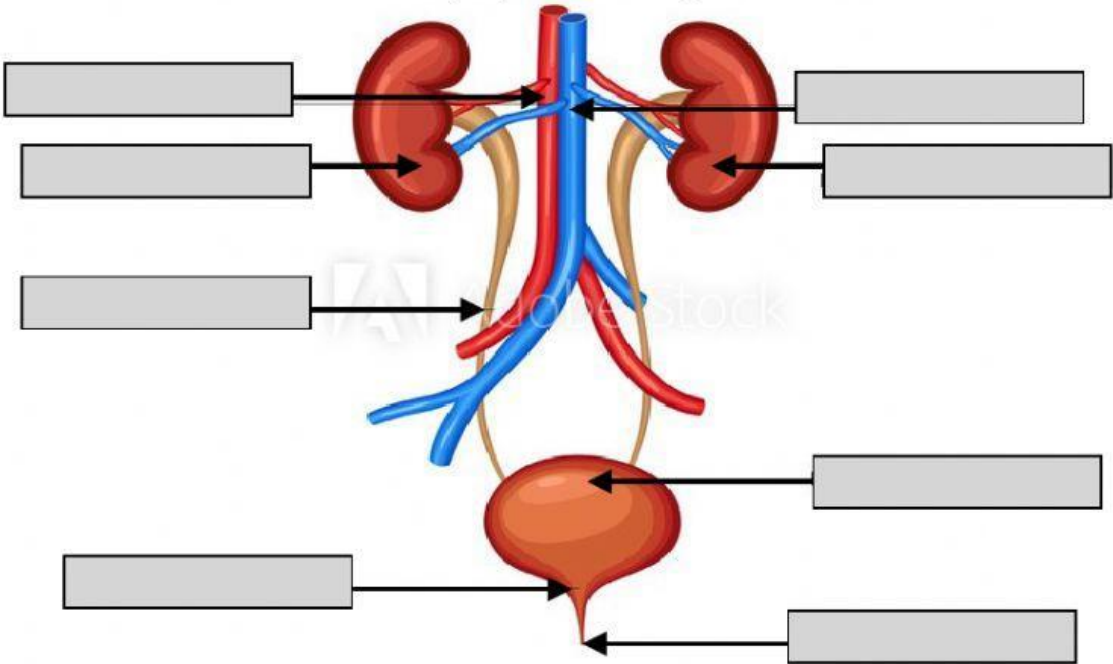


bladder	urethra	kidneys
urea	ureters	urine

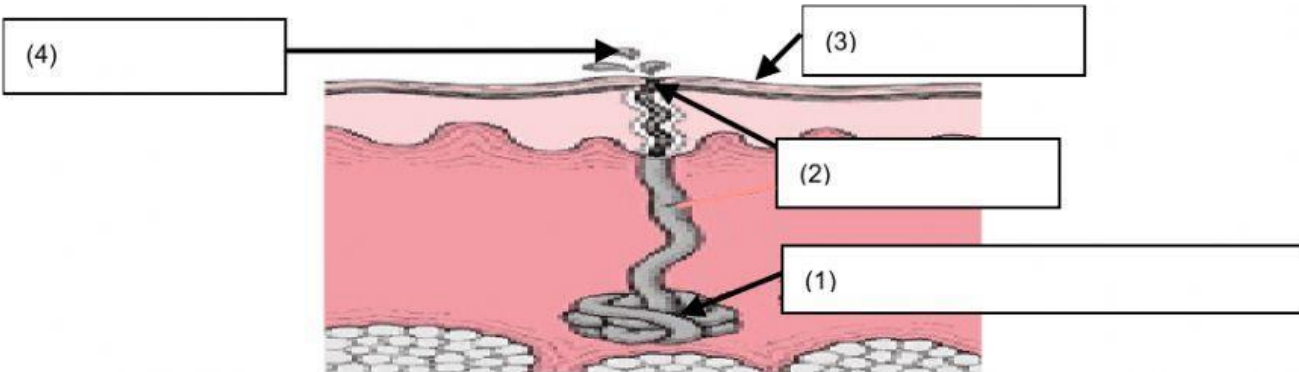
- 1. \_\_\_\_\_ - two ducts where urine travels to the bladder
- 2. \_\_\_\_\_ - where blood is filtered and waste is converted into urea
- 3. \_\_\_\_\_ - a muscular bag that holds urine
- 4. \_\_\_\_\_ - a pair of bean-shaped organs that filter urea from the blood
- 5. \_\_\_\_\_ - the substance that the liver creates from nitrogen waste
- 6. \_\_\_\_\_ - how urine leaves the body
- 7. \_\_\_\_\_ - a mixture of urea and water

Blood is filtered by the \_\_\_\_\_ which turns waste into a chemical called \_\_\_\_\_. Then the \_\_\_\_\_ filter the urea out the blood and mix it with water. The \_\_\_\_\_ then travels through the \_\_\_\_\_ to the muscular bag called the \_\_\_\_\_. The urine leaves the body through the \_\_\_\_\_.

Urinary System Diagram



Integumentary System Diagram



pores  
sweat glands

water  
minerals

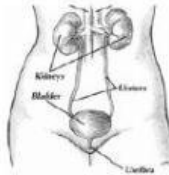
sweat  
skin

Our body also eliminates waste products through the (3)\_\_\_\_\_.

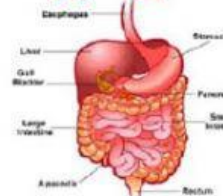
When we are hot, (1)\_\_\_\_\_, that we have in our skin, get active to lower the body's temperature. These glands excrete (4)\_\_\_\_\_, which is a mixture of \_\_\_\_\_ and \_\_\_\_\_, and it leaves our body through the (2)\_\_\_\_\_.

## What four systems are most involved in excreting (getting rid of) wastes?

# 1



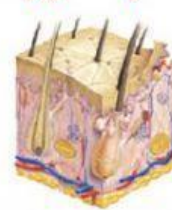
# 2



# 3



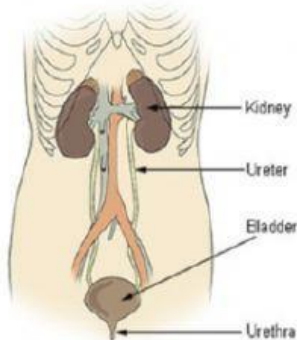
# 4



# 1

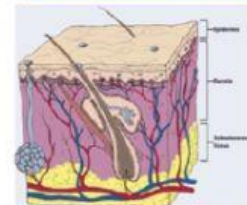
Is made of:

2 Kidneys  
2 Ureters  
1 Bladder  
1 Urethra



# 4

The Integumentary System serves as a cushion, protection, a regulator, a sensory receptor, and an **EXCRETER OF WASTES**.



It rids the body of excess water and salt through sweat glands



# 2

The Digestive System is responsible for taking the food we eat and converting it to energy for our bodies to use.



What is not useable for the body is released as solid waste.



# 3

