



## THE KINGDOM OF PLANTS. UNIT 1

1- Classify the sentences into nutrition or interaction. Write a new sentence for each category.

the roots absorb the water

the roots grow towards the water

the leaves absorb the energy from the sun

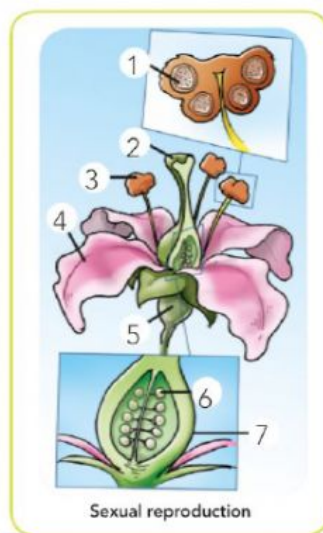
the flowers grow towards the sun

the leaves release oxygen into the air

branches grow away from the wind

NUTRITION	INTERACTION

2- Write the names of these parts of the flower:



1-

2-

3-

4-

5-

6-

7-

pistil, stamen, pollen, sepal, calyx, ovules, petal

What type of reproduction can we find in the plantae kingdom?



CEIP Bilingüe  
Virgen del Oro  
Abarán - Murcia



## The process of photosynthesis

Water and \_\_\_\_\_ are absorbed through the \_\_\_\_\_. They become \_\_\_\_\_ sap. This travels through the \_\_\_\_\_ around the plant. Carbon \_\_\_\_\_ is absorbed from the \_\_\_\_\_ through the \_\_\_\_\_ in the leaves.

Plants need \_\_\_\_\_ to transform the substances they have absorbed into nutrients. This process is called \_\_\_\_\_ and it happens in the \_\_\_\_\_ of the plants.

Plant cells contain a substance called \_\_\_\_\_ that absorbs the Sun's energy. This energy transforms xylem sap and carbon dioxide into \_\_\_\_\_ which has the \_\_\_\_\_ that the plant needs to be alive.

This process has a waste substance which is very important for living things: \_\_\_\_\_.