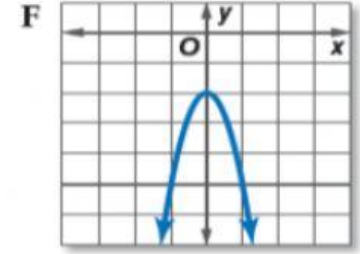
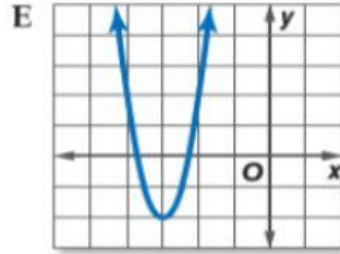
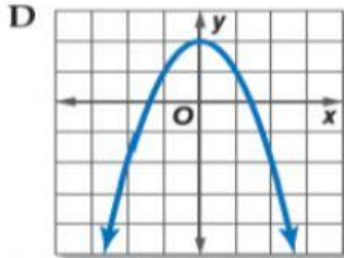
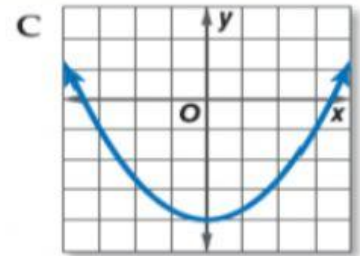
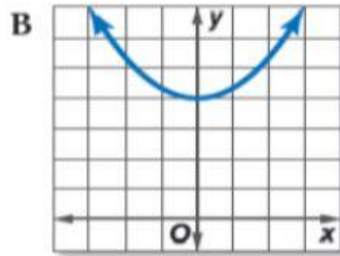
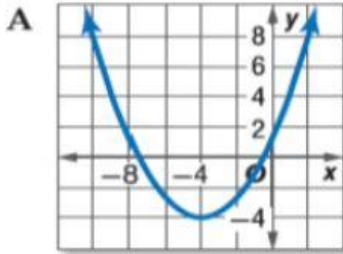


طابق كل معادلة بالتمثيل البياني الخاص بها.



$$y = \frac{1}{3}x^2 - 4$$

$$y = -3x^2 - 2$$

$$y = \frac{1}{3}(x + 4)^2 - 4$$

$$y = -x^2 + 2$$

$$y = \frac{1}{3}x^2 + 4$$

$$y = (2x + 6)^2 - 2$$