

## Heavy vs Light

1) Circle the heaviest object.



2) Circle the lightest object.



3) Circle the heaviest object.



4) Circle the lightest object.



# Heavy vs Light

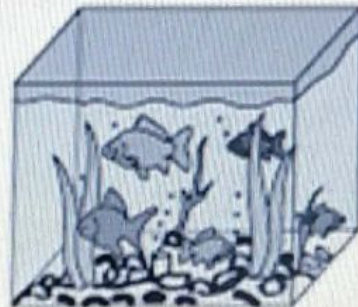
Tick the correct choice that best describes the weight of each object.

1)



☐ Heavy ☒ Light

2)



☐ Heavy ☐ Light

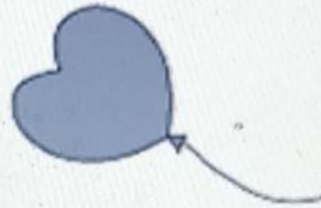


3)



☐ Heavy ☐ Light

4)



☐ Heavy ☐ Light

5)



☐ Heavy ☐ Light

6)



☐ Heavy ☐ Light