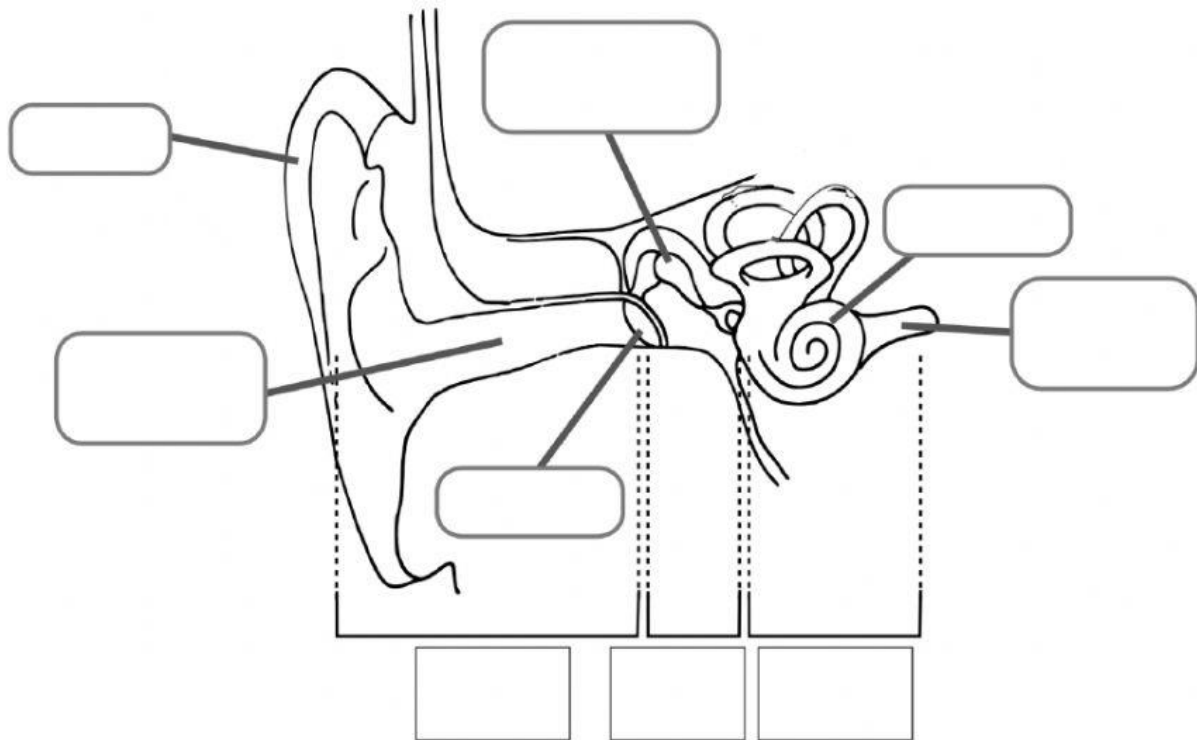


|  |                                     |                  |
|--|-------------------------------------|------------------|
|  | Name and Surname: .....             | <b>NS<br/>U2</b> |
|  | Date: ..... Natural Science 3 ..... |                  |

## 1. Label the parts of the ear

**Ear                  ear canal          Small Bones          Cochlea          Eardrum**

**Auditory nerve          outer ear          middle ear          inner ear**



## 2. Match the sentences

Coloured part of the eye.

Black circle of the eye.

Takes the signals to the brain.

It's at the back of the eye.

Optic nerve

Retina

Iris

Pupil