

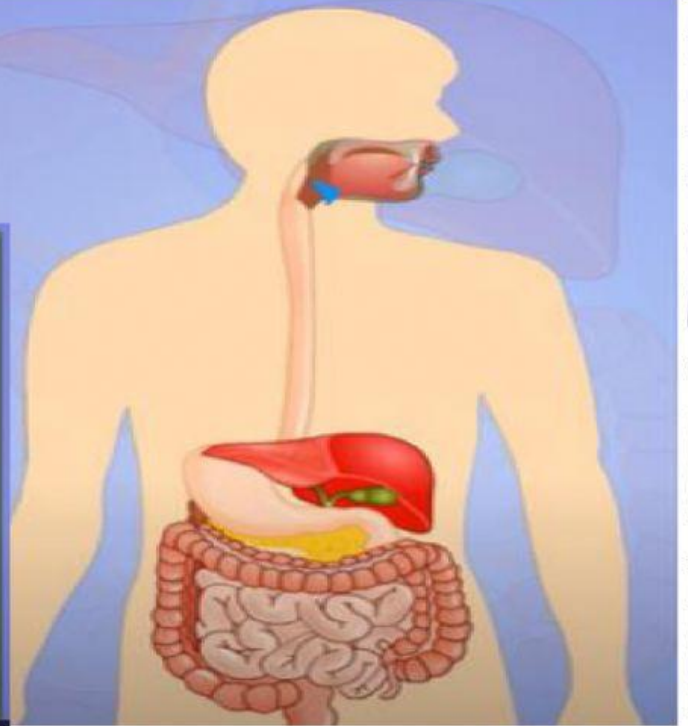
Anatomy

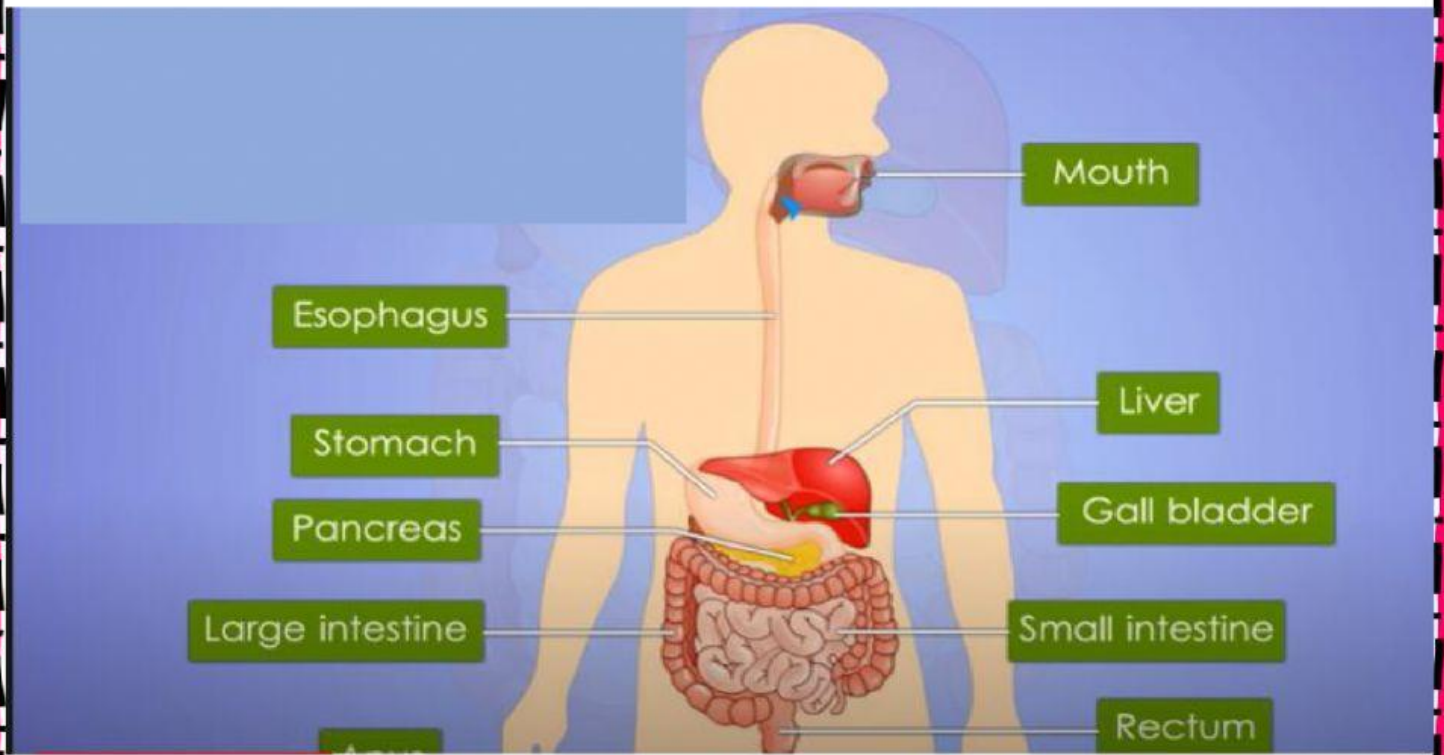
Core 2

The digestive system

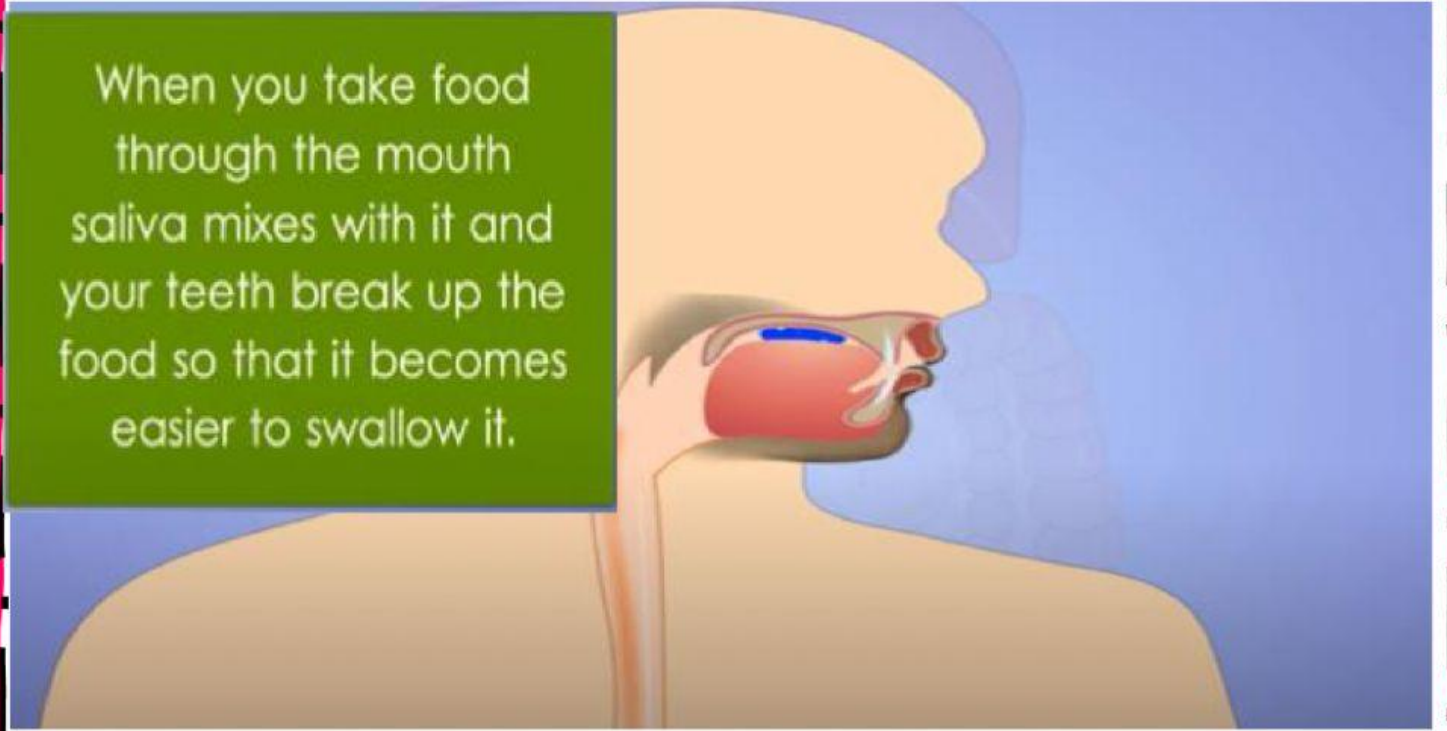
The Digestive System

The **digestive system** is responsible for breaking down food we eat into smaller components so that nutrients can be easily absorbed by the body and the waste discarded.





When you take food through the mouth saliva mixes with it and your teeth break up the food so that it becomes easier to swallow it.



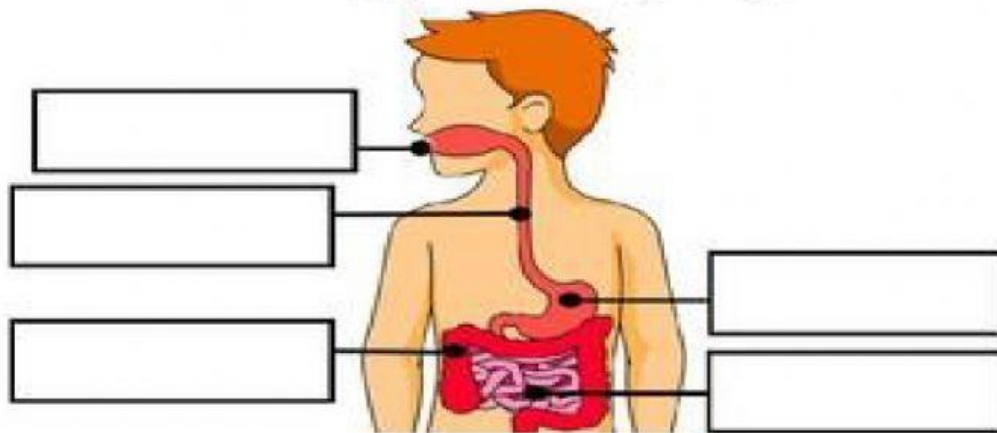
Stomach

After entering your **stomach**, the food mixes with some gastric juices from your **pancreas**, **liver** and **gallbladder** and breaks it down further into a paste.



ACTIVITY

The Digestive System



stomach	large intestine	mouth
esophagus	small intestine	

Part

Function

Mouth

Oesophagus

Stomach

Large intestine

Small intestine

Rectum