

• READ THE TEXT AND CHOOSE THE CORRECT WORDS.

## THE CHINESE ZODIAC



In China, the day you are born on is not as important as the year you are born in. And if you want to know a (1) \_\_\_\_\_ person's age, you don't ask how old they are, you ask for their Zodiac animal.

There are twelve Zodiac animals, one for each year of the moon's cycle. Some Chinese people believe that Buddha (2) \_\_\_\_\_ to call all animals to Earth and the twelve animals which appeared are the animals of the Zodiac signs. To decide the order of the Chinese Zodiac cycle, the animals (3) \_\_\_\_\_ a race. The first animal to cross the river got the first year and the second got the second year, and so on. The strong and hardworking ox was winning, but suddenly, the clever and (4) \_\_\_\_\_ rat jumped on the ox's back and the ox (5) \_\_\_\_\_ feel it. At the last second, the rat jumped off the ox's back and won the race. The ox came second and tiger came (6) \_\_\_\_\_. Then came the rabbit, followed by the dragon, the snake, the horse, the sheep, the monkey, the rooster, the dog and finally, the happy but (7) \_\_\_\_\_ pig.

Buddha said that children who (8) \_\_\_\_\_ born in the year of a particular animal would have the same characteristics as that animal.



• READ AND CLICK THE CORRECT WORD.

1. You don't tell the truth. You're...

- a) dishonest                      b) lazy                      c) organised                      d) clever

2. You've got a lot of friends. You're...

- a) intelligent                      b) popular                      c) brave                      d) vain

3. You've got a lot of imagination. You're...

- a) hard working                      b) kind                      c) creative                      d) organised

4. You find it difficult to talk to people. You're...

- a) vain                      b) shy                      c) lucky                      d) loyal

• LISTEN AND DRAG THE NAMES TO THE PHOTOS.





**Emily and Lisa**



**Frank**



**Gary**



**Jack**



**Jane**



**Lucy**



**Mary**



**Nicky**

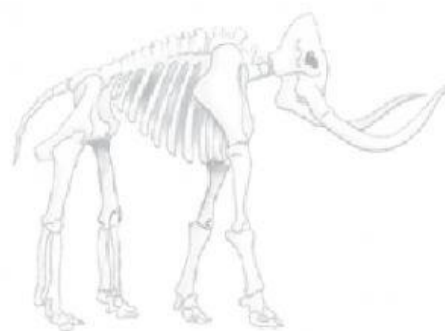


**Rob**



**Susan and Tim**

**• MATCH THE QUESTIONS WITH THEIR ANSWERS.**



1. What was it?
2. How long were its tusks?
3. How tall was it?
4. Did it eat meat?
5. How heavy was it?

- a. They were three metres long.
- b. It was four metres tall.
- c. It was a Columbian mammoth.
- d. It weighed 4,500 kg.
- e. No, it didn't. It was a herbivore.