


CAN YOU understand these people?

 **4.23** Watch or listen and answer the questions.



1

Talitha



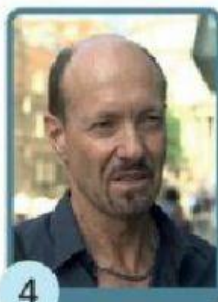
2

Joelle



3

Sophie



4

Brian



5

Tom

- 1 Talitha works ____.
 - a 27 hours a week
 - b in a market
 - c 37 hours a week
- 2 Joelle has ____.
 - a a 13-year-old sister
 - b a 30-year-old sister
 - c three sisters
- 3 Sophie usually gets up at ____ at weekends.
 - a 7.30
 - b 9.00
 - c 9.30
- 4 Brian ____.
 - a goes to the gym and does yoga
 - b plays football and does yoga
 - c goes to the gym and plays a team sport
- 5 Tom likes ____ in New York.
 - a the taxis
 - b the people
 - c the food