

## REVISION UNIT 1

### PART I ANIMALS

1. Complete the sentences using the words in the box. Be careful, there are two extra words.

are born   food   water   soil   grow   wind   air   die

- a) All living things need \_\_\_\_\_, \_\_\_\_\_ and \_\_\_\_\_.
- b) All living things \_\_\_\_\_, \_\_\_\_\_ and \_\_\_\_\_.

2. Match.

A plant takes water from the soil

Interaction

A zebra sees a lion and runs away

Reproduction

A baby is born after being nine months inside his mother

Nutrition

3. Match the pictures with the right life process



REPRODUCTION

NUTRITION

INTERACTION

4. Copy.

- a) All living things are born, grow and die.

- b) All living things need water, food and air.

5. Write the life process.

	<hr/>
	<hr/>

6. Choose the correct word to complete the sentences.

Animal Kingdom

Plant Kingdom

kingdoms

Fungi Kingdom

- All living things are divided into\_\_\_\_\_.
- The\_\_\_\_\_, the\_\_\_\_\_and the\_\_\_\_\_.

7 Move them in order to the Correct colum

1 They move about.

5. They rot other living things.

2. They make their own food.

6. They can't move about.

3. They eat other living

7. A frog

9. Grass

4. They can't move about.

8. Lavander

10. A snail

Animal Kingdom	Plant Kingdom	Fungi Kingdom

**8. Write the name of the kingdom.**

**9. Match.**

Animal Kingdom

Plant Kingdom

Fungi Kingdom

They rot other living things.

They move about.

They make their own food.

**10-Complete the sentences.**

move	animal	fungi	plants	can not	plant	rot
------	--------	-------	--------	---------	-------	-----

a) A lion belongs to the \_\_\_\_\_ Kingdom.

b) \_\_\_\_\_ don't make their own food. They \_\_\_\_\_ other living things.

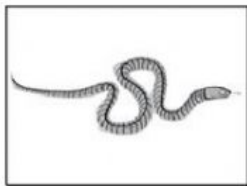
c) A rose belongs to the \_\_\_\_\_ Kingdom.

d) Plants \_\_\_\_\_ move about.

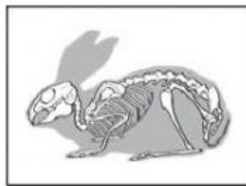
e) \_\_\_\_\_ make their own food.

f) Animals \_\_\_\_\_ about.

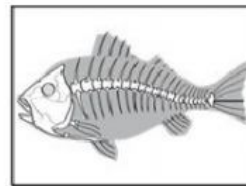
1. Write the names of the animals.



\_\_\_\_\_



\_\_\_\_\_

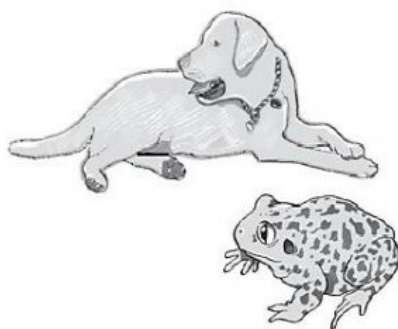


\_\_\_\_\_

2. Write *has* or *doesn't have* to make the sentences true.

has

doesn't have



The dog *has* a tail

A toad *doesn't have* a tail

a) A bird \_\_\_\_\_ a backbone.

b) A frog \_\_\_\_\_ a tail.

c) A rabbit \_\_\_\_\_ a tail.

d) A bear \_\_\_\_\_ limbs.

e) A snake \_\_\_\_\_ limbs.

f) A fish \_\_\_\_\_ limbs.

g) A bear \_\_\_\_\_ a backbone.

h) A snake \_\_\_\_\_ a backbone.

3. Join the words to make true sentences. First with *has* then with *doesn't have*.

A lobster

An ant

An oyster

A caterpillar

has

doesn't have

a thin skeleton

a soft body

a thick skeleton

a shell

---



---



---



---