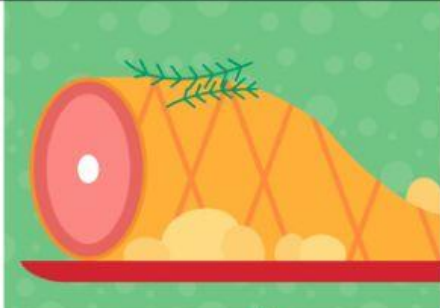


What is on the picture?



1. Mince pie
2. Turkey
3. Gingerbread



1. Yule log
2. Figgy pudding
3. Ham



1. Yule log
2. Gingerbread
3. Mince pie



1. Chicken
2. Figgy pudding
3. Gingerbread



1. Fish and chips
2. Figgy pudding
3. Hot chocolate



1. Eggnog
2. Mince pie
3. Candy cane