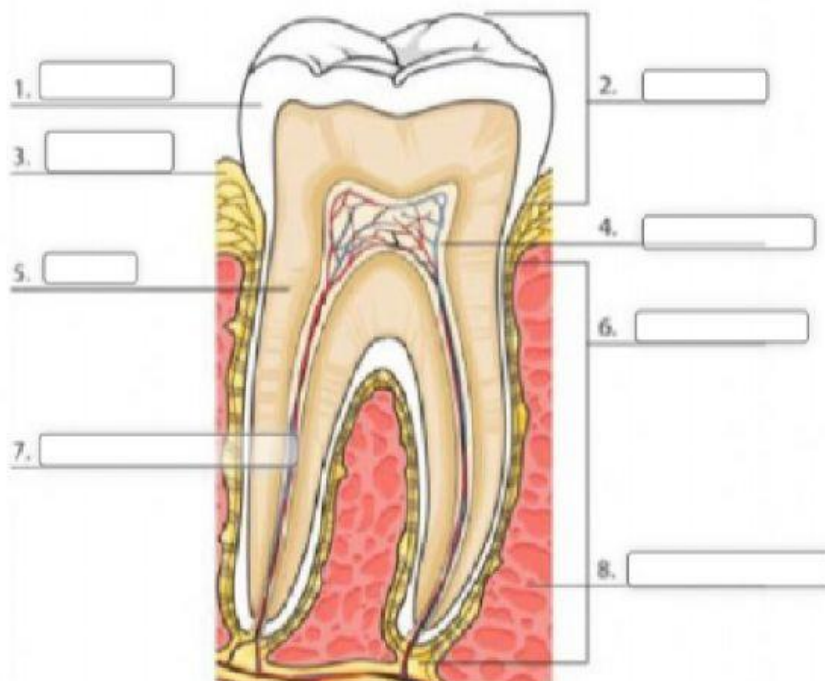


Match nouns and definitions using colours.

ENAMEL <input type="text"/>	It is the layer below* the enamel . <input type="text"/>
PULP* <input type="text"/>	It is the part of a tooth normally visible in the mouth. <input type="text"/>
CROWN <input type="text"/>	It is the whitish* covering* of the crown. It is the hardest substance in the body. <input type="text"/>
DENTIN* <input type="text"/>	It is the soft portion inside the dentin . It consists of blood vessels* and nerves. <input type="text"/>
ROOT <input type="text"/>	It is the part inside the gum . <input type="text"/>

Label the picture using the words from the box.

dentin - pulp - root - gums - crown - blood vessels and nerves - enamel - jawbone*



* inside = dentro
pulp = polpa
dentin = dentina

gum = gengiva

whitish = biancastra

vessels = vasi sanguigni

enamel = smalto

covering = copertura

jawbone = mandibola

below = al di sotto

Finish!!