

you belong with me by Taylor Swift

You're on the phone with your (1) _____
 She's (2) _____
 She's going off about something that you said
 'Cause she doesn't get your humor like I do
 I'm in my room
 It's a typical (3) _____ night
 I'm listening to the kind of music she (4) _____ like
 And she'll never know your story like I do
 But she wears short (5) _____
 I wear (6) _____
 She's cheer captain
 And I'm on the bleachers
 Dreaming about the day (7) _____ you wake up
 And find that what you're looking for has been here the whole time

CHORUS 1

If you can see I'm the one (8) _____ understands you
 Been here all along so why can't you see
 You belong with me (x2)

Walking the streets with you and your worn-out (9) _____
 I can't help thinking this is how it ought to be
 Laughing on a park bench, thinking to (10) _____
 Hey isn't this easy

And you've got a (11) _____ that could light up this whole town
 I haven't seen it in a while since she brought you down
 You say you're fine
 I know you better than that
 Hey what you doing with a girl like that

She wears (12) _____
 I wear (13) _____
 She's cheer captain and I'm on the bleachers
 Dreaming about the day when you wake up
 And find that what you're looking for has been here the whole time

REPEATS CHORUS 1

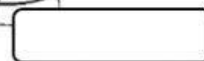
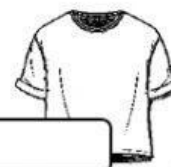
CHORUS 2

- ☐ Baby, you belong with me
- ☐ You belong with me
- ☐ Standing by and waiting at your back door
- ☐ All this time how could you not know

Oh, I remember you driving to my house in the middle of the (14) _____
 I'm the one (15) _____ makes you laugh
 When you know you're about to cry
 And I know your favorite (16) _____
 And you tell me about your (17) _____
 I think I know where you belong
 I think I know it's with me

Can't you see that I'm the one who understands you
 Been here all along so why can't you see
 You belong with me

REPEATS CHORUS 2 [...]



ACTIVITIES

- A. Write the names of the different types of clothes mentioned in the song.
- B. Fill in the gaps with a suitable word.
- C. Put the lines in **CHORUS 2** in the correct order.
- D. Find in the song 3 wh-words that add necessary information about the previous word.