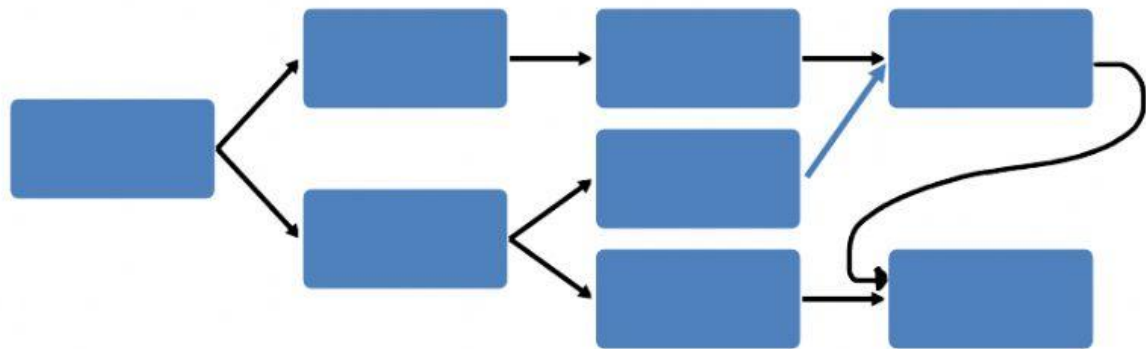


Q1) Produce the network diagram for the project tasks and activities shown below.

Activity	Predecessor	Duration (days)	Comments
A	-	3	Planning
B	A	4	Execution
C	A	2	Execution
D	B	5	Execution
E	C	1	Execution
F	C	2	Monitoring
G	D, E	4	Monitoring
H	F, G	3	Ending



Q2) what is the total duration of the project?