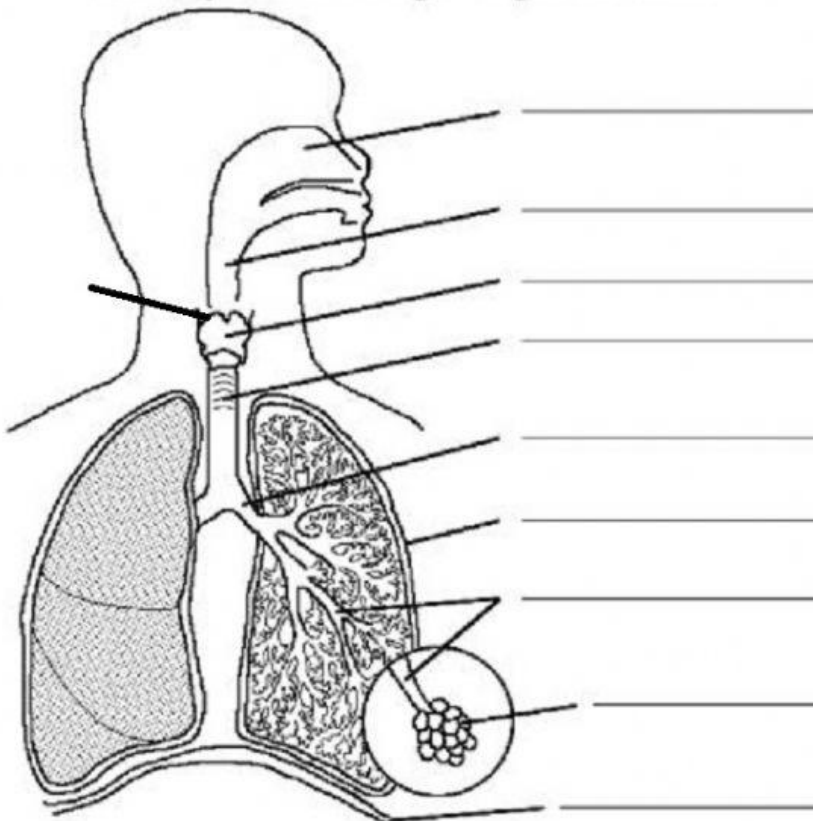


# Respiratory System



**Epiglottis**  
-> A flap of cartilage that opens and closes the way to trachea.

**Bronchi** -> 2 narrower tubes that lead into the lungs.

**Trachea** -> A tube of C-shaped rings that serves as a pathway of air in and out of the lungs.

**Pleural membranes**  
-> covers the lungs

**Larynx or voice box** -> a triangular - shaped area that contains vocal cords which vibrate and make sounds as air passes over.

**Nasal cavity** - holds numerous nerve endings for smelling and cilia for protection lined with mucous membrane to prevent damage due to dryness.

**Pharynx** - A tube like passage way at the top of the throat that moistens the inhaled air and directs into the lower respiratory system.

## Bronchioles

**Alveoli** -> Thin walls and large surface area.  
-> gas exchange occurs.

**Diaphragm** -> A flat muscle that contracts when inhaling to allow air to fill the lungs and relaxes when exhaling to push air out of the lungs.