

1 PUBLIC TRANSPORT AND VEHICLES

a Match the words and pictures.

carriage /'kærɪdʒ/	scooter /'sku:tə/
coach /kəʊtʃ/	the underground /'ʌndəgraʊnd/
lorry /'lɒri/ (AmE truck)	(AmE subway)
motorway /'məʊtəweɪ/	tram /træm/
platform /'plætfɔ:m/	van /væn/

b 2 2 Listen and check.

c Cover the words and look at the pictures.
Try to remember the words.



2 ON THE ROAD

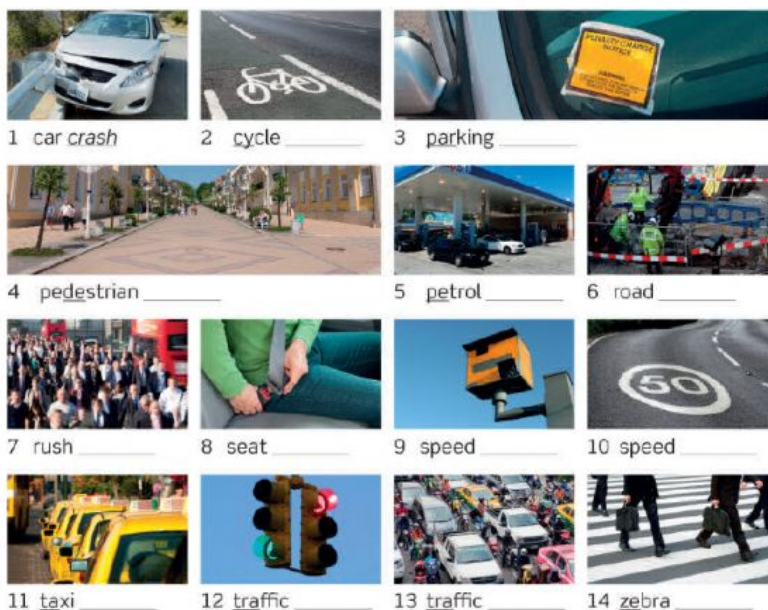


Compound nouns

Compound nouns are two nouns together where the first noun describes the second, e.g. a *child seat* = a seat for a child, a *bus stop* = a place for buses to stop, etc. In compound nouns the first noun is stressed more strongly than the second. There are many compound nouns related to road travel.

a Complete the compound nouns.

belt /belt/ camera /'kæməɾə/ crash /kræʃ/ crossing /'krɒsɪŋ/ fine /faɪn/
hour /'aʊə/ jam /dʒæm/ lane /leɪn/ lights /laɪts/ limit /'lɪmɪt/ rank /ræŋk/
station /'steɪʃn/ works /wɜ:ks/ zone /zəʊn/



b 2 3 Listen and check. Then cover the compound nouns and look at the pictures. Remember the compound nouns.

3 HOW LONG DOES IT TAKE?



How long does it take?

It **takes** about an hour to get from London to Oxford by train.

It **took (me)** more than an hour to get to work yesterday.

How long does it take (you) to get to school?

Use *take* (+ person) + time (+ to get to) to talk about the duration of a journey, etc.

Read the information box above. Then ask and answer with a partner.

- How do you get to work / school?
How long does it take?
- How long does it take to get from your house to the town centre?



Phrasal verbs

Learn these phrasal verbs connected with transport and travel.

We **set off** at 7.00 in the morning to try to avoid the traffic. (= leave on a journey)

I arrive at 8.15. Do you think you could **pick me up** at the station? (= collect sb, in a car, etc.)

I got on the wrong bus, and I **ended up** on the opposite side of town. (= find yourself in a place / situation that you did not expect)

We're **running out of** petrol. Let's stop at the next petrol station. (= finish your supply of sth)

Watch out! / **Look out!** You're going to crash! (= be careful or pay attention to sth dangerous)