

FEEL- Robbie Williams

1. Come and **hold / cold** my hand
I wanna contact the living
Not sure I **comprehend / understand**
This role I've been given

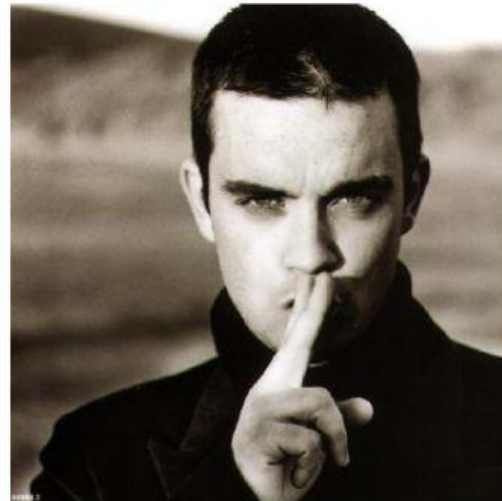
2. I sit and **walk / talk** to God
And he just **laughs/ laugh** at my plans
My head **speaks/speak** a language
I don't understand

3. I just wanna **feel/heal** real love
Feel the home that I live in
'Cause I got too much life
Running through my veins
Going to waste

4. I don't wanna _____ (**die/lie**)
But I ain't keen on living either
Before I _____ in love (**fall/call**)
I'm preparing to leave her
I scare myself to death
That's why I _____ on running (**seek/keep**)
Before I've arrived
I can _____ myself coming (**see/hear**)

5. I just wanna **feel/heal** real love
Feel the home that I live in
'Cause I got too much life
Running through my veins
Going to waste
And I need to **feel/heal** real love
And a life ever after
I cannot **set/get** enough
I just wanna **feel/heal** real love ...

6. And I need to **feel/heal** real love
In a life ever after
There's a hole in my soul
You can **see/hear** it in my face
It's a real big place
Come and hold my hand ...



1. Write ten verbs from the song. Then change them to the third person. (he, she, it)

1. _____
2. _____
3. _____
4. _____
5. _____
6. _____
7. _____
8. _____
9. _____
10. _____

2. Find one example of a negative sentence .

3. Find one part of the body.
