

1 **SPEAKING** Work in pairs. Can you answer this famous riddle from Sophocles' play *Oedipus the King*? Explain your answer.

'What creature walks on four legs in the morning, two legs in the afternoon, and three in the evening?'

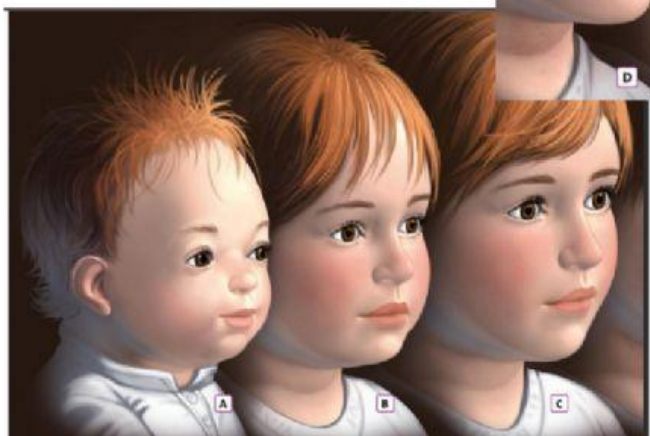
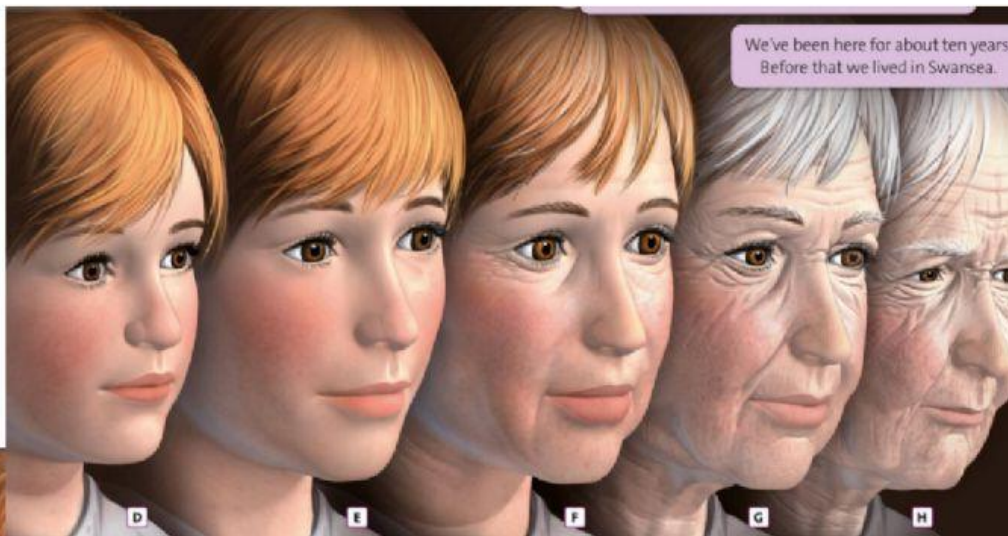
Be an infant

Be an adult

Be a toddler

Be a young child

Be a centenarian



Be an elderly

Be in your twenties

Be in your teens

Be middle-aged