

“-ing” SPELLING RULES

We add “-ing” to an action (a verb) so we can describe what is happening NOW.

These are some rules we have to learn very well:

- 1) General Rule: add “-ing”. Example: drink + ing = **drinking**
- 2) Silent “e” Rule: drop silent “e” before adding “-ing”.
Example: dance**e** + ing --- danc**(e)**ing = **dancing**
- 3) Double Consonant Rule: double the last consonant before adding “-ing”. We can apply this rule when the verb (the action) meets the 1-1-1 condition.

The 1-1-1 condition happens when a verb has got:

- only 1 syllable (a syllable is one beat we say when pronouncing a word);
- only 1 short vowel (a, e, i, o, u); and
- only one final consonant.

Example: “**cut**”. We can say cut**t** + ing = cut**tt**ing, because...

- This verb is pronounced in just one beat (or one clap of your hands). **So it meets the 1-syllable condition.**
- This verb has got only 1 short vowel “**u**” (as in “umbrella). **So it meets the 1-short vowel condition.**
- This verb has got only 1 final consonant “**t**”. **So it meets the 1-final consonant condition.**

Let’s see now if you understood these three rules. Write the “ing” words by applying one of the above rules. Check the rule you have used.

Come + ing= _____



- General Rule
- Silent "e" Rule
- Double Consonant Rule

Go + ing= _____



- General Rule
- Silent "e" Rule
- Double Consonant Rule

Make + ing= _____



- General Rule
- Silent "e" Rule
- Double Consonant Rule

Do + ing= _____



- General Rule
- Silent "e" Rule
- Double Consonant Rule

Sit + ing= _____



- General Rule
- Silent "e" Rule
- Double Consonant Rule

Draw + ing= _____



- General Rule
- Silent "e" Rule
- Double Consonant Rule

Colour + ing= _____



- General Rule
- Silent "e" Rule
- Double Consonant Rule

Cut + ing= _____



- General Rule
- Silent "e" Rule
- Double Consonant Rule

Clean + ing= _____



- General Rule
- Silent "e" Rule
- Double Consonant Rule

Smell + ing= _____



- General Rule
- Silent "e" Rule
- Double Consonant Rule

blow + ing= _____



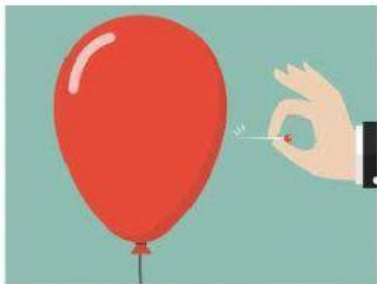
- General Rule
- Silent "e" Rule
- Double Consonant Rule

throw + ing= _____



- General Rule
- Silent "e" Rule
- Double Consonant Rule

Burst + ing= _____



- General Rule
- Silent "e" Rule
- Double Consonant Rule

Read + ing= _____



- General Rule
- Silent "e" Rule
- Double Consonant Rule

Eat + ing= _____



- General Rule
- Silent "e" Rule
- Double Consonant Rule

Open + ing= _____



- General Rule
- Silent "e" Rule
- Double Consonant Rule

look + ing= _____



- General Rule
- Silent "e" Rule
- Double Consonant Rule

Watch + ing= _____



- General Rule
- Silent "e" Rule
- Double Consonant Rule

Have fun + ing= _____



- General Rule
- Silent "e" Rule
- Double Consonant Rule