

UNIVERSIDAD NACIONAL AUTÓNOMA DE MÉXICO
ESCUELA NACIONAL PREPARATORIA N° 4 "VIDAL CASTAÑEDA Y NÁJERA"
ENGLISH IV – UNIT 2
DETERMINERS

A. COMPLETE THE FOLLOWING DESCRIPTION ABOUT A MISTERY PAITING. USE THE WORDS IN THE BOX.

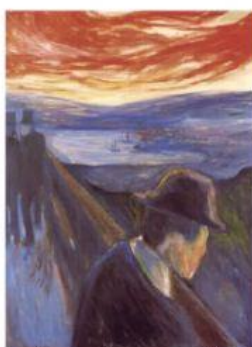
background / those / left-hand side / looks like / there are / there is / there is / this

1 _____ painting is beautiful, many artists had tried to replicate it but
2 _____ paintings are not as good as the original. In the front
3 _____ a man standing on a bridge. He 4 _____ he is screaming.
His face is expressing surprise and fear. His mouth is open in an 'O' shape, his
eyes are wide open and his hands are on his bald head. In the 5 _____,
on the 6 _____, 7 _____ two people walking towards him but they
don't look worried. The sky is blood red and under the bridge, 8 _____
a blue river.

B. CHOOSE THE PAINTING THAT CORRESPONDS TO THE DESCRIPTION.



"The Scream" by Edvard Munch



"Despair at Sunset" by Edvard Munch



"Despair" by Edvard Munch