

Plant and Animal cells

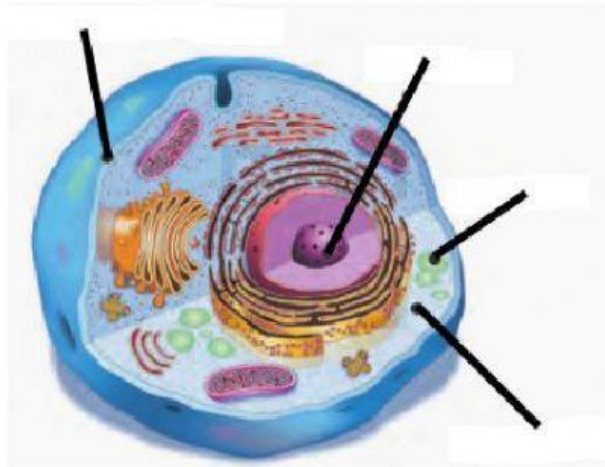
1. Drag the names of the parts of the cells into their correct places:

Vacuole

Cytoplasm

Nucleus

Cell membrane



What type of cell is it?

2. Drag the names of the parts of the cells into their correct places:

Nucleus

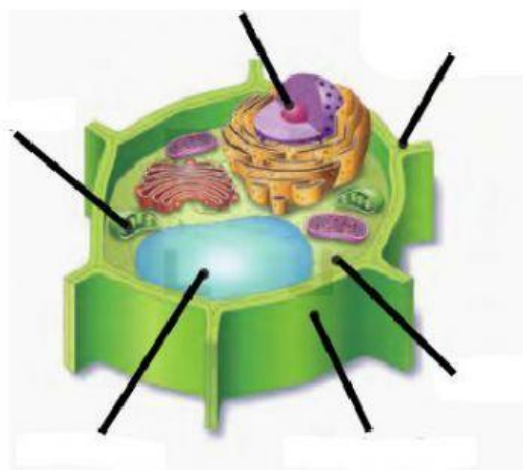
Cell membrane

Chloroplast

Vacuole

Cell wall

Cytoplasm



What type of cell is it?

3. Match the parts of the cell to what they do:

| | |
|-------------|---|
| Nucleus | Stores water and minerals |
| Membrane | Occupies the interior of the cell. It's like jelly |
| Chloroplast | Protects the cell and controls what goes in and out |
| Cytoplasm | Extra protection and it makes the cell more rigid |
| Cell wall | Does photosynthesis |
| Vacuole | Controls the cell and contains the DNA |

4. Choose the correct option - plant cells, animal cells or both

Membrane

Cytoplasm

Chloroplasts

Cell wall

Big vacuoles

Nucleus

