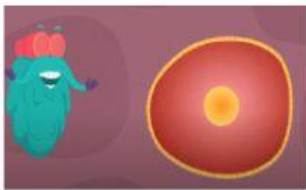


# LET'S REVIEW CELL STRUCTURE!

1- Watch this video and complete:



- This is a cell.



- The cell is the BASIC unit of life.



- The CELL MEMBRANE is the outer part of the cell.



- MITOCHONDRIA make the PROTEINS of the cell.



- RIBOSOMES produce the ENERGY of the cell.



- The NUCLEOUS is the brain of the cell.



- CHROMOSOMES are IN the Nucleous.

YES

NO



- CYTOPLASM is a jelly-like substance in the cell.

YES

NO



- LYSOSOMES clean the waste material.

YES

NO

## 2-MATCH THE CELL ORGANELLES TO THEIR FUNCTION

CELL MEMBRANE

NUCLEOUS

DNA

NUCLEOLOUS

RIBOSOMES

LYSOSOMES

MITICHONDRIA

Orders the cell what to do

Gives shape to the cell. It is the outer part

Controls the cell and has the DNA

Make PROTEINS

Makes the RIBOSOMES

Makes the ENERGY

Are the GARBAGE COLLECTORS

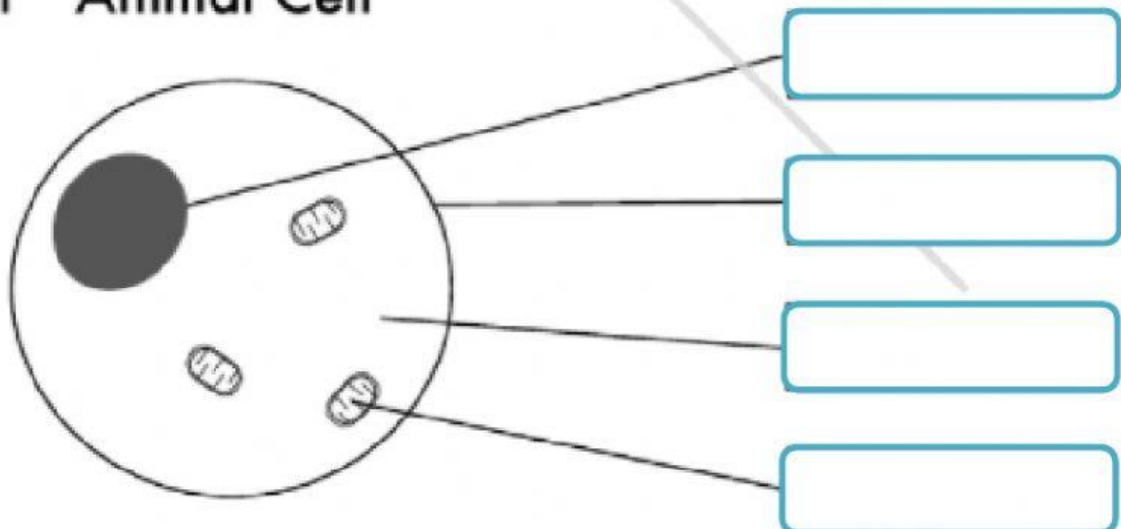
### 3- LABEL these CELL parts.

NUCLEOUS – CELL MEMBRANE – CYTOPLASM - MITOCHODRIA

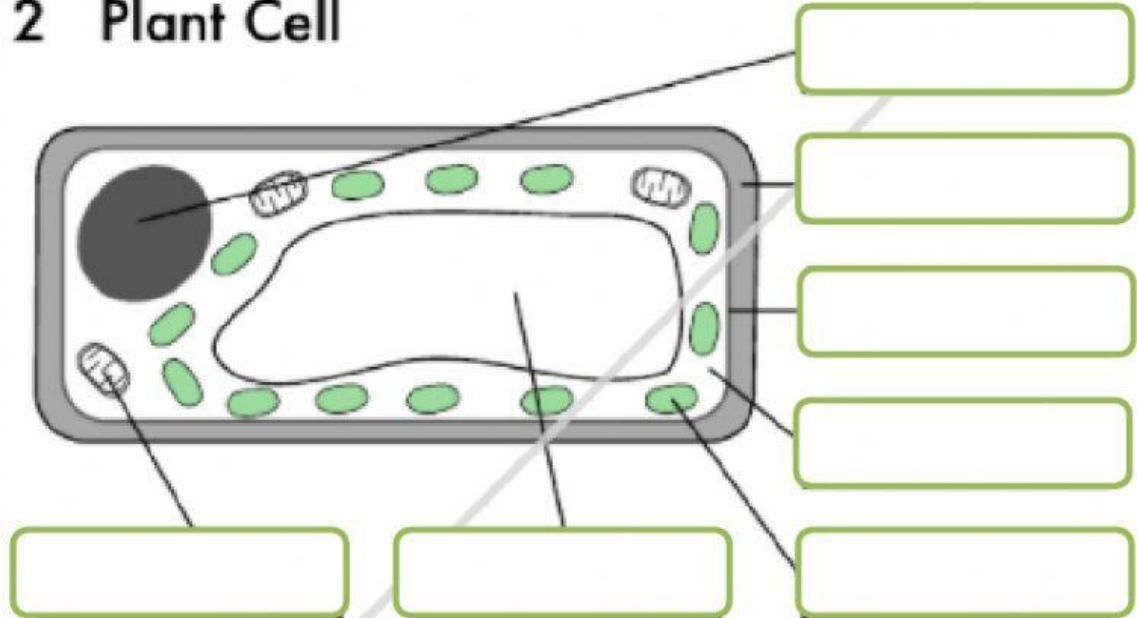
#### (PARTS OF THE CELL)

★ Label the cell parts in the diagrams below

#### 1 Animal Cell



#### 2 Plant Cell



NUCLEOUS – CELL MEMBRANE – CYTOPLASM – MITOCHODRIA –  
VACUOLE – CHLOROPLAST – CELL WALL