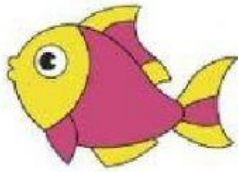


BEGINNING SOUNDS

CIRCLE THE BEGINNING SOUND OF THE OBJECTS SHOWN.



b

f

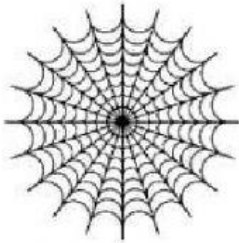
z



b

s

q



t

w

s



l

y

p



r

x

s



t

b

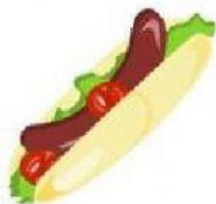
d



b

a

t



a

h

p

CIRCLE THE CORRECT SPELLING OF THE OBJECT SHOWN IN THE PICTURE.

	hen	enh	neh
	tha	hat	aht
	ucp	puc	cup
	axe	exa	xae