

LOOK AND WRITE SENTENCES

Negative Form

Maluma



He isn't

Lali Esposito



She isn't

Maluma and Lali



They aren't

Example:



+



_____ **She isn't** playing the guitar _____.

1.



+



_____.

2.



+



3.



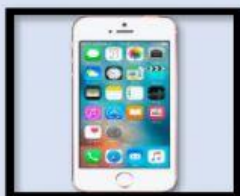
+



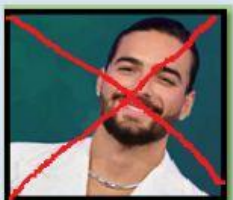
4.



+



5.



+



6.



+



7.



+



8.



+