

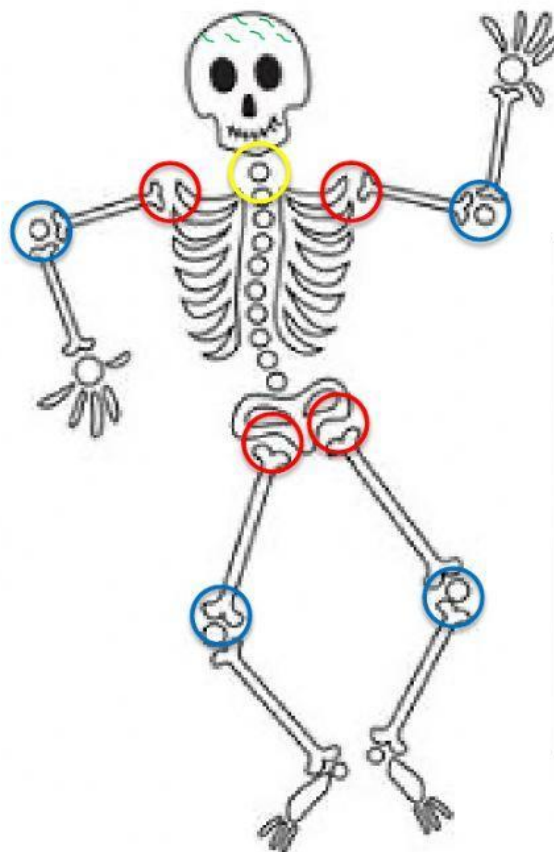
Skeletal & Muscular System
Mrs.Faraudo, Mrs. Pereira & Mrs. O





I. Drag & drop the type of muscle on the line provided.

cardiac muscle	smooth muscle	skeletal muscle
----------------	---------------	-----------------

1. Which type of muscle is voluntary and located in the arms and legs?	
2. Which type of muscle is involuntary, located in the heart, and helps pump blood?	
3. Which type of muscle is involuntary and located in the stomach, esophagus, and intestines?	

II. Drag & drop the joints name next to its matching color.



	_____
	_____
	_____
	_____

Hinge	Ball & Socket	Fixed	Pivot
-------	---------------	-------	-------

III. Drag & drop the joint with its movement.

	Circular movements
	Bends; Back & forth
	Side to side
	Doesn't move

Hinge	Ball & Socket	Fixed	Pivot
--------------	--------------------------	--------------	--------------

IV. Match. Draw a line from the bone to the organ that it protects.

- | | |
|---------------|-----------------|
| 1) Skull ☺ | ☺ Spinal cord |
| 2) Ribcage ☺ | ☺ Brain |
| 3) Backbone ☺ | ☺ Heart & Lungs |

V. Organize the characteristics of the SKELETAL & MUSCULAR SYSTEMS by dragging & dropping the statements below into the correct spaces.

SKELETAL SYSTEM	MUSCULAR SYSTEM

Characteristics:

They contract to help our body move.	It supports & gives structure to our body.	It is made out of bones, cartilage & ligaments.	Some are voluntary or involuntary.
The strongest are the heart & tongue.	Store calcium and inside we find the marrow.	There are 3 kinds with different jobs.	Protect main organs.

