

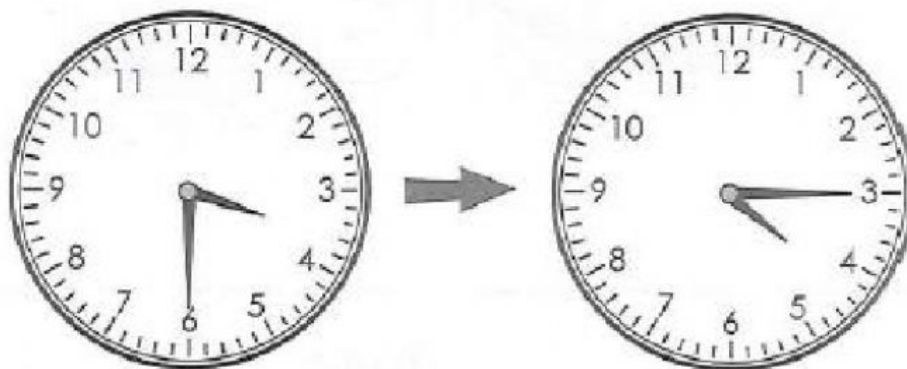
# MATHS:

Kelly took the bus home from school at 12:10 p.m.  
The bus ride took 35 minutes.  
What time did Kelly reach her home?



- ☐ 1. Un
- ☐ 2. Plc
- ☐ 3. An
- ☐ 4. Ch

A television program started at 3:30 p.m. and  
ended at 4:15 p.m.  
How long was the television program?



- ☐ 1. U
- ☐ 2. P
- ☐ 3. A
- ☐ 4. C

# MATHS:

a)



The time is 6:30 a.m.

30 minutes later,

it will be

b)



The time is 9:45 p.m.

4 hours later,

it will be

Click Here

