

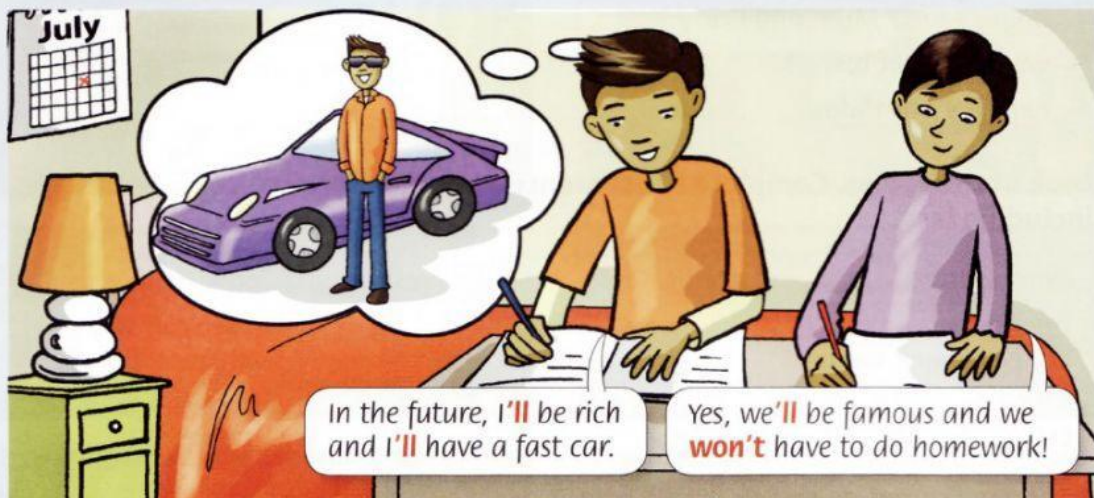


# Future predictions: will - won't

93

Watch the video

## Will and won't



We use **will** and **won't** to talk about the future.

Affirmative = **will** or **'ll** + base form.

It **will** be warmer. We'll travel by rocket.

We often use the contracted form **'ll** after pronouns like **I** and **you**, and after **there**.

**We'll** eat better food. **There'll** be more pollution.

We make negatives with **won't** + base form.

People **won't** have big cars. Money **won't** be important.

We make questions with **will** + subject + base form.

**Will** the test be easy? Yes, it **will**. / No, it **won't**.

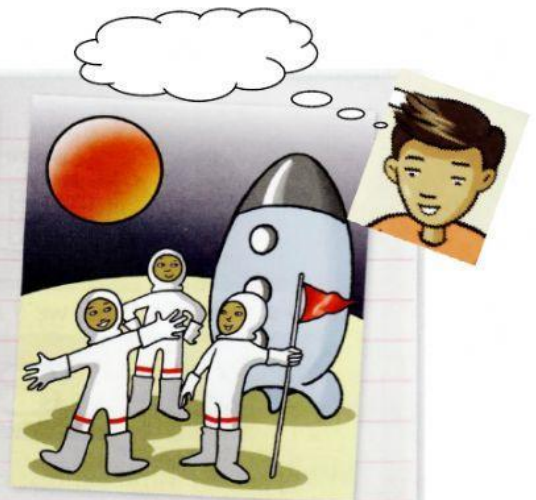
The forms **will**,  
**'ll** and **won't**  
don't change.





Look at the notes. Write sentences about Charlie's life in the future. Use **will** and **won't**.

- 1 I / drive / a fast car ✓
- 2 I / have to / go to school ✗
- 3 my dad / have to / work ✓
- 4 there / be / cartoons / on TV all the time ✓
- 5 I / take / my friends / to the moon ✓
- 6 there / be / any pollution ✗
- 7 robots / do / all the boring work ✓
- 8 people / travel / by plane ✗
- 9 towns and cities / be / safe ✓
- 10 I / have to pay for / anything ✗



1. I **will** drive a fast car.
2. I **won't** have to go to school.
- 3.
- 4.
- 5.
- 6.
- 7.
- 8.
- 9.
- 10.