

WHAT IS HE WEARING?

WHAT IS SHE WEARING?



She is wearing a pink hat, an orange jacket, pink gloves, and yellow boots.



She is wearing a pink and purple sweater, light blue trousers, and purple shoes.



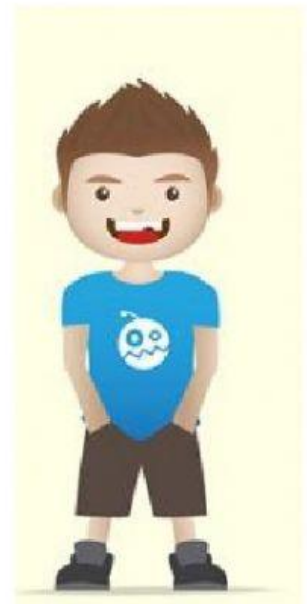
He is wearing a light blue T-shirt, brown shorts, and black shoes.



She is wearing a purple and white T-shirt, an orange skirt, purple socks, and orange shoes.



He is wearing a blue hat, a purple jacket, purple gloves, grey trousers, and light blue shoes.



She is wearing a green dress and yellow boots.