



A SPECIAL FAMILY:

DASH HELEN

BOB

JACK

VIOLET



A) Describe the characters using these words (Describe a cada uno de los personajes utilizando estas palabras):

SHORT(X4) LONG VIOLET BLONDE(X3) BROWN(X2)

LIGHT-BLUE (X3) BLUE BIG(X4) WAVY STRAIGHT



DASH: I have got hair and eyes.

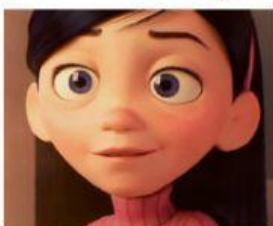


HELEN: I have got hair and eyes.



BOB: I have got hair and eyes.

JACK: I have got hair and eyes.



VIOLET: I have got hair and eyes.



